

OPERATION MANUAL

USF-GUI-Launcher

USF-106UDC-12G
USF-106DC-12G
USF-101MDX4-12G
USF-101MDX8-12G
USF-105FS-12G

2nd Edition - Rev. 2

Version 2.1 - Higher

Table of Contents

1. Prior to Starting.....	3
2. System Requirements	3
3. Installing USF-106UDC/DC-12G GUI	4
4. Installing USF-101MDX4/8-12G GUI	5
5. Installing USF-105FS-12G GUI.....	6
6. Installing USF-GUI-Launcher	7
7. Adding (USF Module) Units to the Connection List.....	8
8. Specifying GUI Software Versions	10
8-1. Specifying USF-106UDC/DC-12G GUI Versions	10
8-2. Specifying USF-101MDX4-12G GUI Versions.....	12
8-3. Specifying USF-101MDX8-12G GUI Versions.....	14
8-4. Specifying USF-105FS-12G GUI Versions	16
9. Starting Windows GUI Software	18
10. Editing the Connection Unit List	19
10-1. Sorting USF Modules in the List	19
10-2. Editing USF Module Information	20
10-3. Deleting USF Modules from the Connection List.....	21

1. Prior to Starting

USF-GUI-Launcher manages remote connection to the following USF modules from Windows GUI software.

- USF-106UDC-12G
- USF-106DC-12G
- USF-101MDX4-12G
- USF-101MDX8-12G
- USF-105FS-12G

The Launcher allows you to automatically start the appropriate version of Windows GUI software for your USF module, to launch two or more instances of Windows GUI for USF modules simultaneously on a PC, and to sort the USF Connection list on the Launcher.

2. System Requirements

To use the USF-GUI-Launcher and Windows GUI, your computer must meet the following requirements.

OS	Windows® 7 (32/64bit) Windows® 8.1 (32/64bit) Windows® 10 (32/64bit)
CPU	Intel® Core™ i5 2.2GHz or higher
RAM	2 GB or more
Display	Resolution: 1280x1024 pixels or better recommended Full color (24-bit) or more
Network port	Ethernet: 100BASE-TX/1000BASE-T More than 1 port
Network cable	100BASE-TX: Category 5 or higher 1000BASE-T: Category 5e or 6
Software	Microsoft® .NET Framework 4.6.2

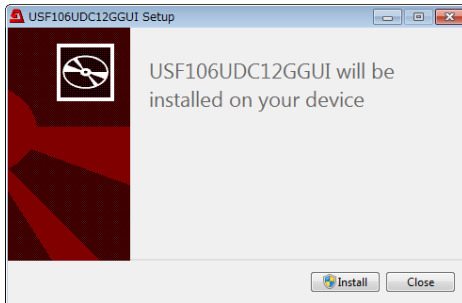
* Mac OS is unsupported.

3. Installing USF-106UDC/DC-12G GUI

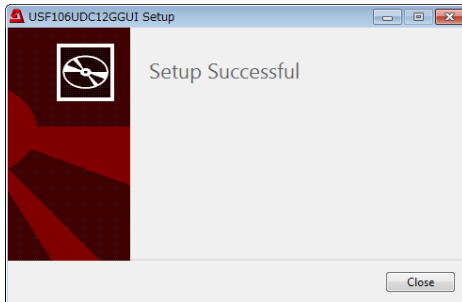
Follow the procedure below to install the **Windows GUI for USF-106UDC-12G and USF-106DC-12G** in your PC.

- (1) Insert the supplied DVD-ROM into your drive, go to the **\English\USF-106UDC_DC-12G \ Windows GUI** folder and open the **"USF106UDC12G_GUI_Setup_*.*.exe"** file. (*.*. indicates the GUI version.)

- (2) Click **Install**.



- (3) When **"Setup Successful"** is displayed, the installation is successfully finished. Click **Close** to close the window.

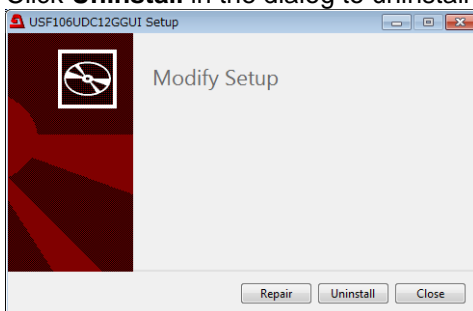


◆ **USF-106UDC/DC-12G GUI Uninstallation**

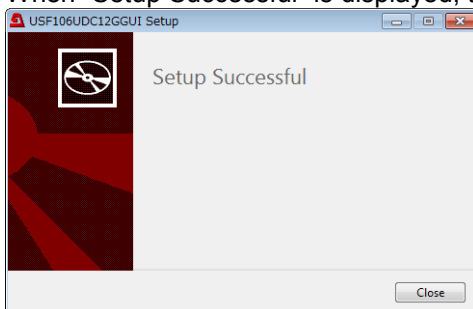
To remove the GUI program from your PC, use "Programs and Features" in Windows.

- (1) Open **"Control Panel > Programs > Programs and Features"** in Windows and select **USF106UDC12G GUI**.

- (2) Click **Uninstall** in the dialog to uninstall the GUI.



- (3) When **"Setup Successful"** is displayed, the uninstallation is successfully finished. Click **Close**.



4. Installing USF-101MDX4/8-12G GUI

Follow the procedure below to install the **Windows GUI for USF-101MDX4/8-12G** in your PC. **USF-101MDX4-12G** and **USF-101MDX8-12G** modules share the same Windows GUI.

- (1) Insert the supplied DVD-ROM into your drive, go to the **\\English\USF-101MDX4-12G\Windows GUI** folder and open the **"USF101MDX12G_GUI_Setup_*.*.exe"** file. (*.*. indicates the GUI version.)
- (2) Click **Install**.



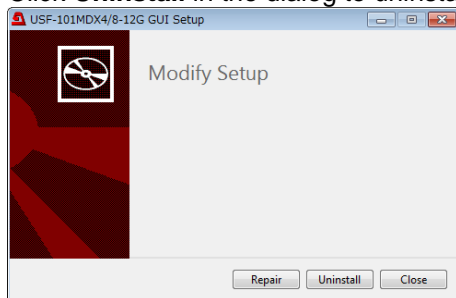
- (3) When "Setup Successful" is displayed, the installation is successfully finished. Click **Close** to close the window.



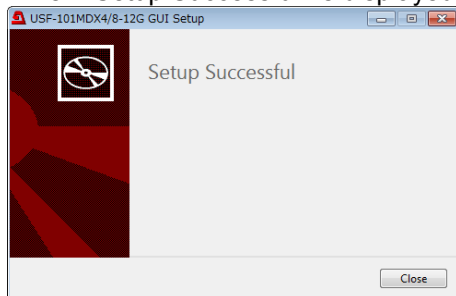
◆ USF-101MDX4/8-12G GUI Uninstallation

To remove the GUI program from your PC, use "Programs and Features" in Windows.

- (1) Open "Control Panel > Programs > Programs and Features" in Windows and select **USF-101MDX4/8-12G GUI**.
- (2) Click **Uninstall** in the dialog to uninstall the GUI.



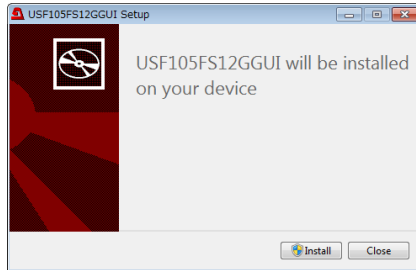
- (3) When "Setup Successful" is displayed, the uninstallation is successfully finished. Click **Close**.



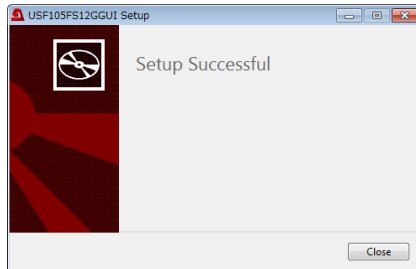
5. Installing USF-105FS-12G GUI

Follow the procedure below to install the **Windows GUI for USF-105FS-12G** in your PC.

- (1) Insert the supplied DVD-ROM into your drive, go to the **\\English\USF-105FS-12G\Windows GUI** folder and open the **"USF105FS12G_GUI_Setup_*.*.exe"** file. (*.*. indicates the GUI version.)
- (2) Click **Install**.



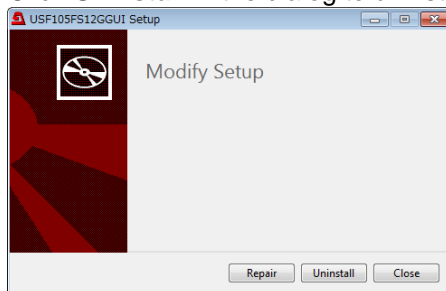
- (3) When "Setup Successful" is displayed, the installation is successfully finished. Click **Close** to close the window.



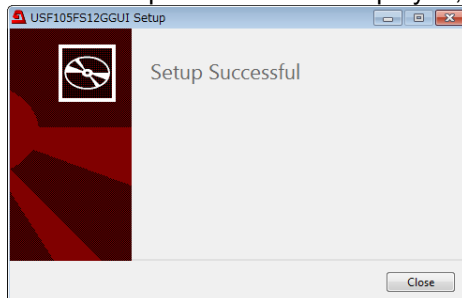
◆ USF-105FS-12G GUI Uninstallation

To remove the GUI program from your PC, use "Programs and Features" in Windows.

- (1) Open "Control Panel > Programs > Programs and Features" in Windows and select **USF105FS12G GUI**.
- (2) Click **Uninstall** in the dialog to uninstall the GUI.



- (3) When "Setup Successful" is displayed, the uninstallation is successfully finished. Click **Close**.



6. Installing USF-GUI-Launcher

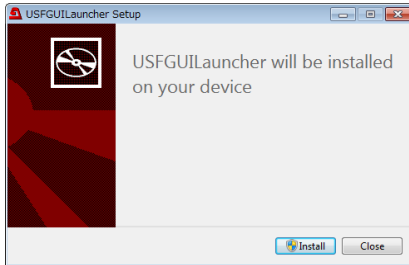
Follow the procedure below to install the **USF-GUI-Launcher** in your PC.

IMPORTANT

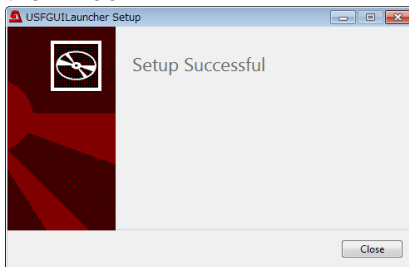
If an older version of USF-GUI-Launcher (Ver. 1.00) is installed on your PC, uninstall the older version before installing the new version.

See “Uninstalling the USF-GUI-Launcher” below to uninstall the GUI Launcher.

- (1) Insert the supplied DVD-ROM into your drive, go to the **English\USF_GUI_Launcher** folder and open the “**USF_GUI_Launcher_Setup_*.*.exe**” file. (*.*. indicates the GUI version.)
- (2) Click **Install**.



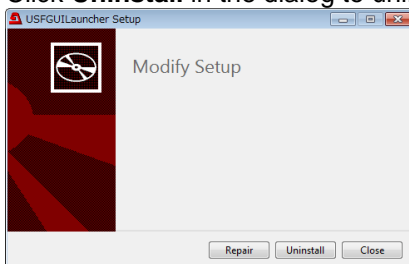
- (3) When “Setup Successful” is displayed, the installation is successfully finished. Click **Close** to close the window.



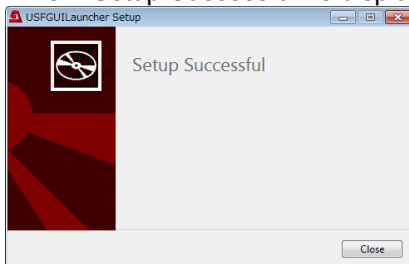
◆ Uninstalling the USF-GUI-Launcher

To remove the Launcher program from your PC, use “**Programs and Features**” in Windows.

- (1) Open “**Control Panel > Programs > Programs and Features**” in Windows and select **USF GUI Launcher**.
- (2) Click **Uninstall** in the dialog to uninstall the Launcher.

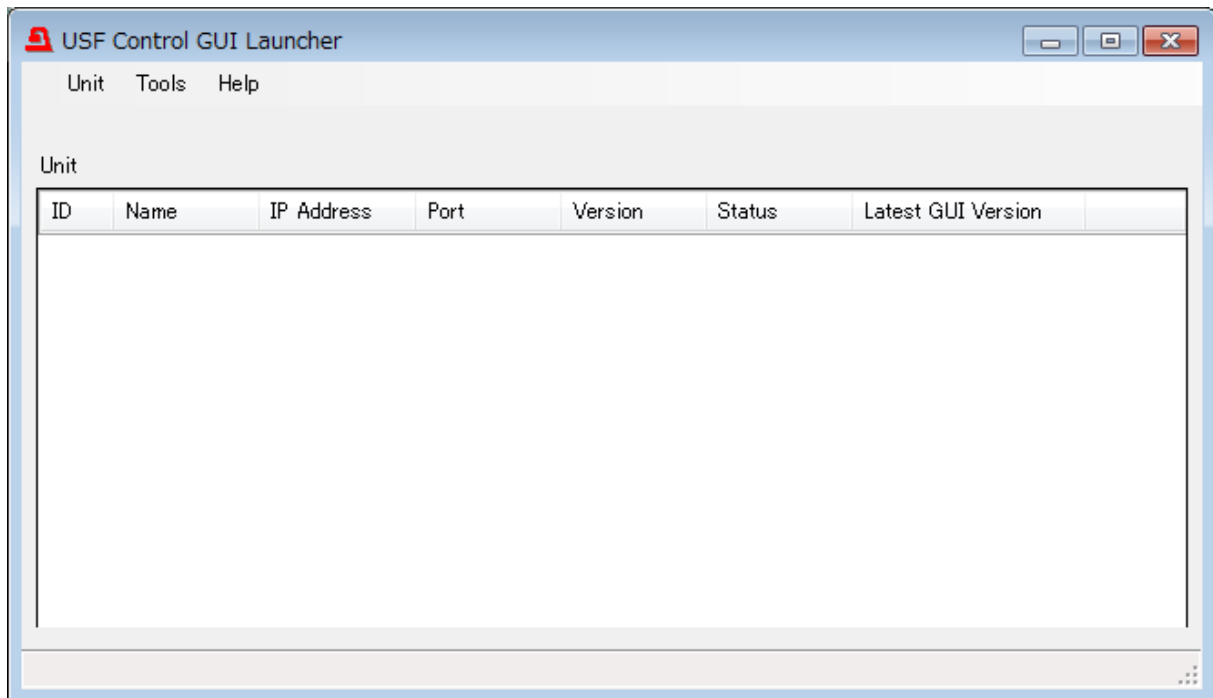


- (3) When “Setup Successful” is displayed, the uninstallation is successfully finished. Click **Close**.

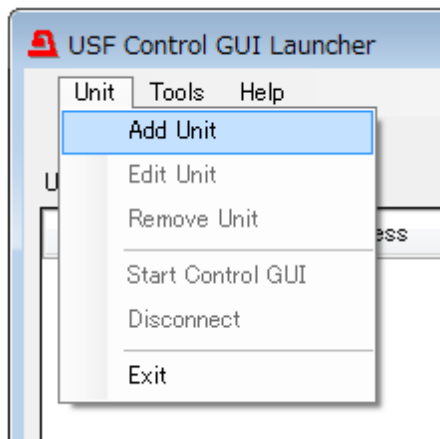


7. Adding (USF Module) Units to the Connection List

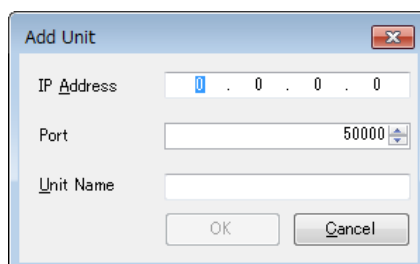
Start the **USF-GUI-Launcher** and display the Connection Unit list for USF modules.
Follow the procedure below to add USF modules to be connected to the list.



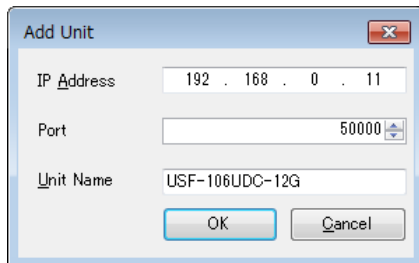
- (1) Select **"Unit -> Add Unit"** in the menu bar.



- (2) An **"Add Unit"** dialog box is displayed.

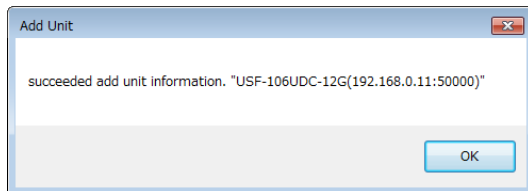


- (3) Enter the following items.
 - USF module **IP address**
 - **Port number** used for specifying module connection
 USF-106UDC/DC-12G factory default port number: **50000** (default setting)
 - **Unit Name** (User-defined arbitrary name for identifying the module unit.)
- (4) Click **OK** to close the dialog box.

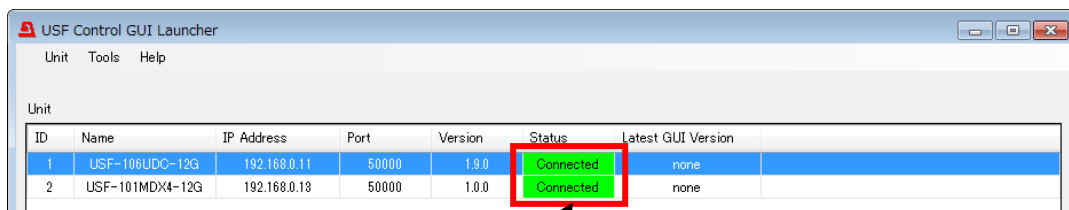


Add Unit example

- (5) A message as shown below appears when the USF module is successfully added to the Connection Unit list. Click **OK** to close the message box.



- (6) Once the USF module is added to the Connection Unit list, the USF-GUI-Launcher starts connection to the module.
 When the connection is established, "**Connected**" is displayed under **Status**.
 (If "**Disconnected**" is displayed, check the PC and USF module network connections.)



Connection status is displayed here.

8. Specifying GUI Software Versions

Follow the procedure below to enter an appropriate Windows GUI software version for each USF module in the Connection Unit list.

IMPORTANT

Windows GUI software versions corresponding to USF modules must be entered in the Connection list. Otherwise, Windows GUI programs may not be launched.

If an incorrect GUI version is registered, remove the following file and re-register correct GUI versions.

Folder: C:\Users\“User name”\AppData\Roaming\FOR-ACOMPANY LIMITED\
FA_USF Control GUI Launcher/
File: **FAUSFGUILauncher.unitversion.json**

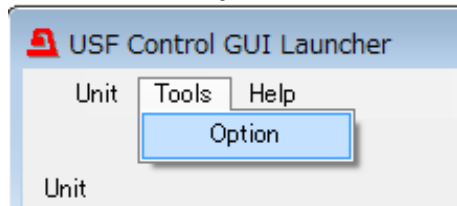
8-1. Specifying USF-106UDC/DC-12G GUI Versions

Verify your USF-106UDC/DC-12G module version in the Connection Unit list.

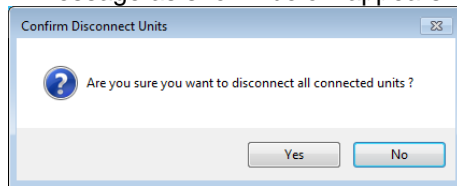
When connecting a USF module with the Launcher, the USF module version is displayed under **Version**. In the following example, the USF-106UDC-12G version is displayed as **1.9.0**.

ID	Name	IP Address	Port	Version	Status	Latest GUI Version
1	USF-106UDC-12G	192.168.0.11	50000	1.9.0	Connected	none
2	USF-101MDX4-12G	192.168.0.13	50000	1.0.0	Connected	none

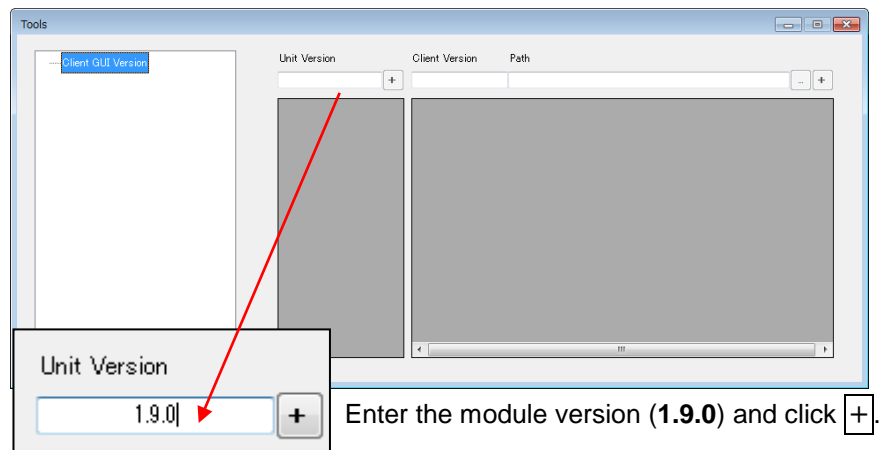
- (1) Select **Tools** -> **Option** in the menu bar.



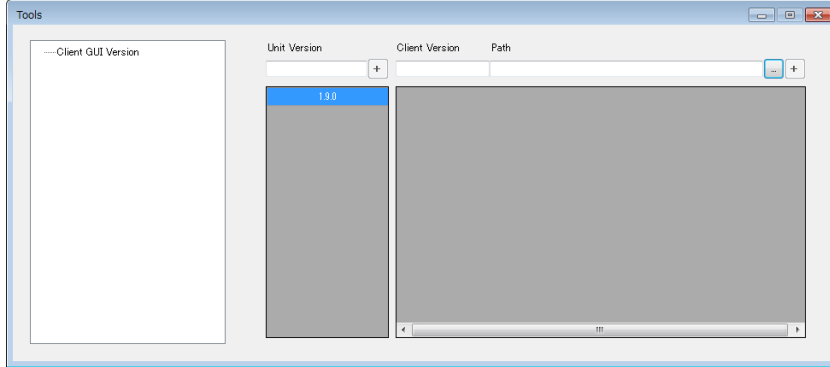
A message as shown below appears. Click **Yes** to disconnect all USF module units.



- (2) The **Tools** window as shown below appears.



- (3) The USF module version is displayed as shown below, when the version is stored in the list.

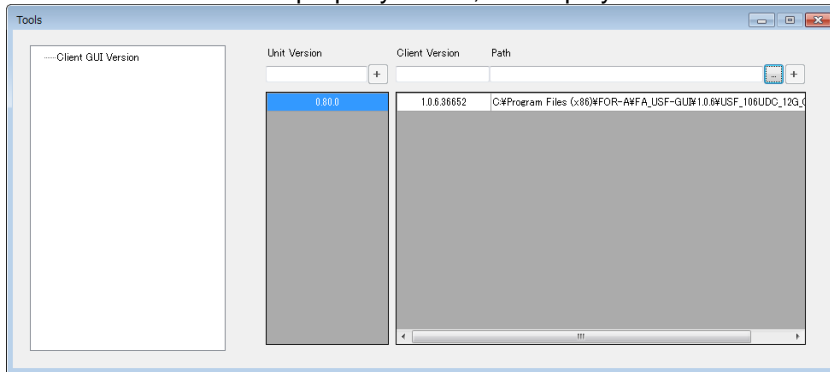


- (4) Enter the following path under **Path** to specify the Windows GUI program:

**C:\Program Files (x86)\FOR-AIFA_USF-GUI\USF-106UDC_DC-12G\1.3.1
USF_106UDC_12G_GUI.exe**

Or, click to the right side of the Path field to specify the above file.

- (5) Click to find and confirm the Windows GUI version corresponding to the USF module. When the GUI version is properly stored, it is displayed as shown below under **Client Version**.



- (6) Close the Tools window.

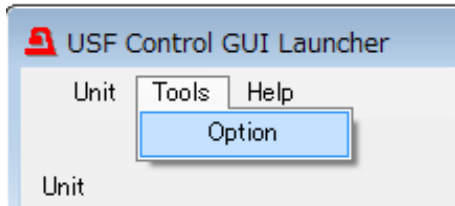
8-2. Specifying USF-101MDX4-12G GUI Versions

Verify your USF-101MDX4-12G module version in the Connection Unit list.

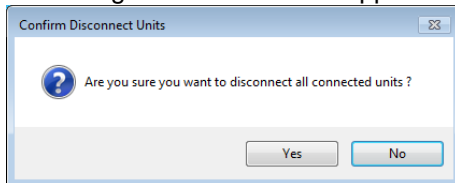
When connecting a USF module with the Launcher, the USF module version is displayed under **Version**. In the following example, the USF-101MDX4-12G version is displayed as **1.0.0**.

ID	Name	IP Address	Port	Version	Status	Latest GUI Version
1	USF-106UDC-12G	192.168.0.11	50000	1.9.0	Connected	none
2	USF-101MDX4-12G	192.168.0.13	50000	1.0.0	Connected	none

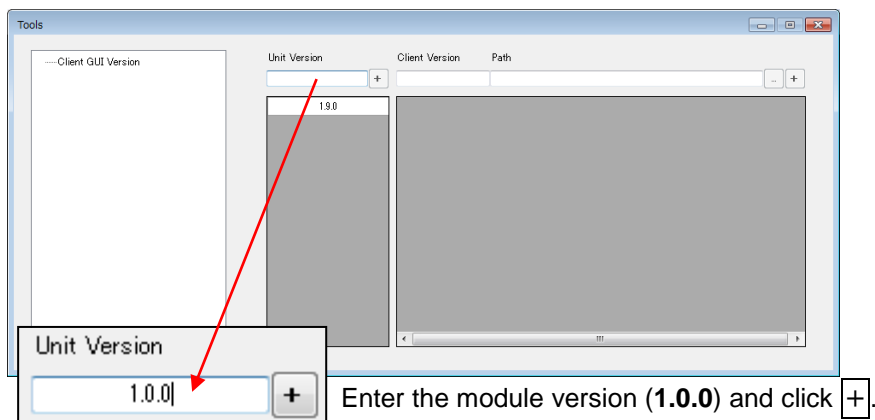
- (1) Select **Tools** -> **Option** in the menu bar.



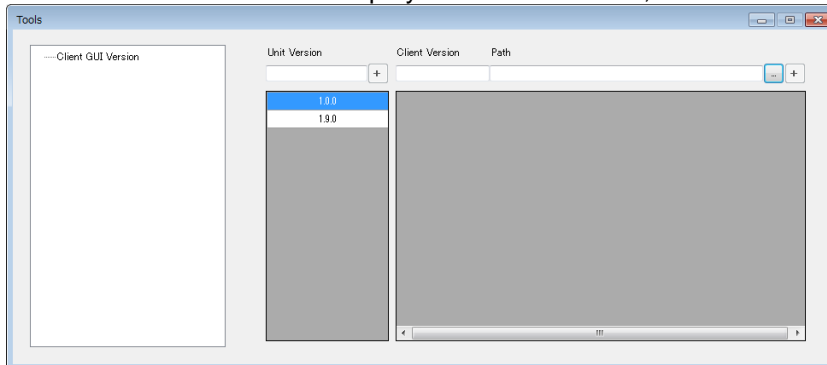
A message as shown below appears. Click **Yes** to disconnect all USF module units.



- (2) The **Tools** window as shown below appears.



- (3) The USF module version is displayed as shown below, when the version is stored in the list.

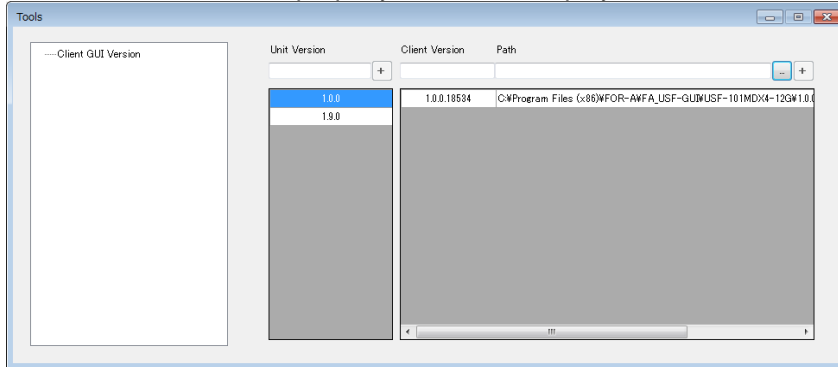


- (4) Enter the following path under **Path** to specify the Windows GUI program:

**C:\Program Files (x86)\FOR-AIFA_USF-GUI\USF-101MDX4_8-12G\1.0.0
USF_101MDX_12G_GUI.exe**

Or, click to the right side of the Path field to specify the above file.

- (5) Click to find and confirm the Windows GUI version corresponding to the USF module.
When the GUI version is properly stored, it is displayed as shown below under **Client Version**.



- (6) Close the Tools window.

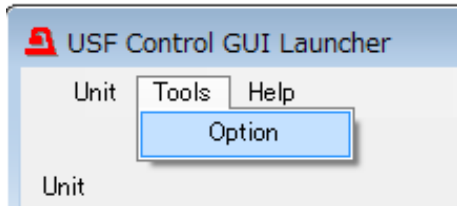
8-3. Specifying USF-101MDX8-12G GUI Versions

Verify your USF-101MDX8-12G module version in the Connection Unit list.

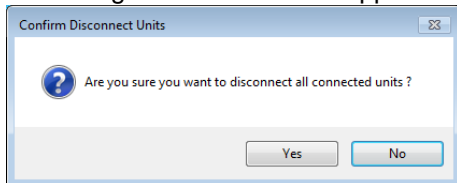
When connecting a USF module with the Launcher, the USF module version is displayed under **Version**. In the following example, the USF-101MDX8-12G version is displayed as **1.0.0**.

ID	Name	IP Address	Port	Version	Status	Latest GUI Version
1	USF-106UDC-12G	192.168.0.11	50000	1.9.0	Connected	none
2	USF-101MDX4-12G	192.168.0.13	50000	1.0.0	Connected	none

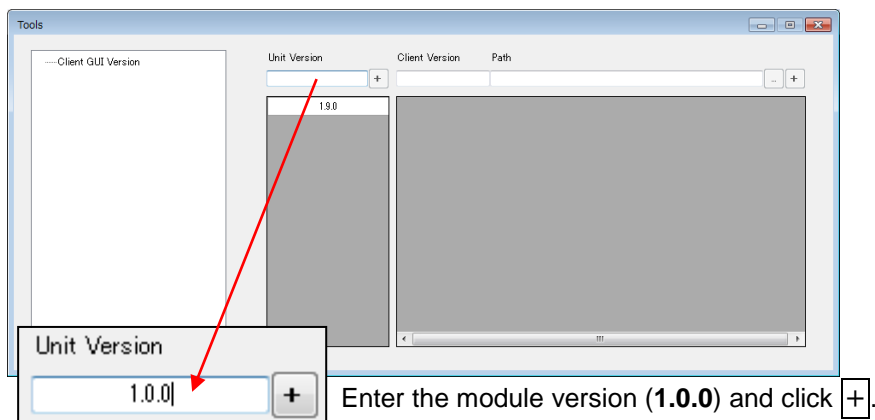
- (1) Select **Tools** -> **Option** in the menu bar.



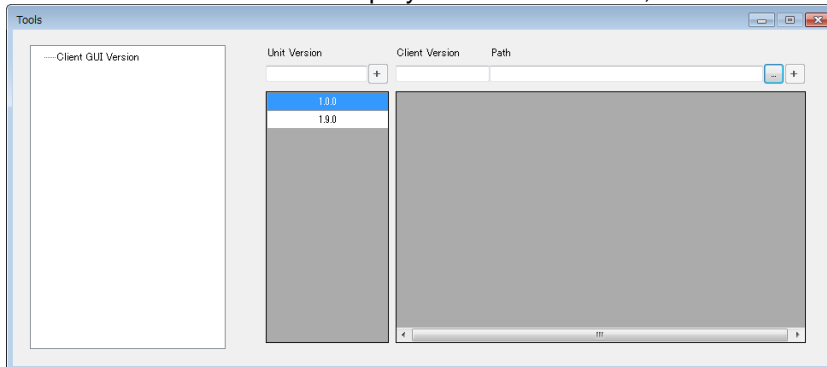
A message as shown below appears. Click **Yes** to disconnect all USF module units.



- (2) The **Tools** window as shown below appears.



- (3) The USF module version is displayed as shown below, when the version is stored in the list.

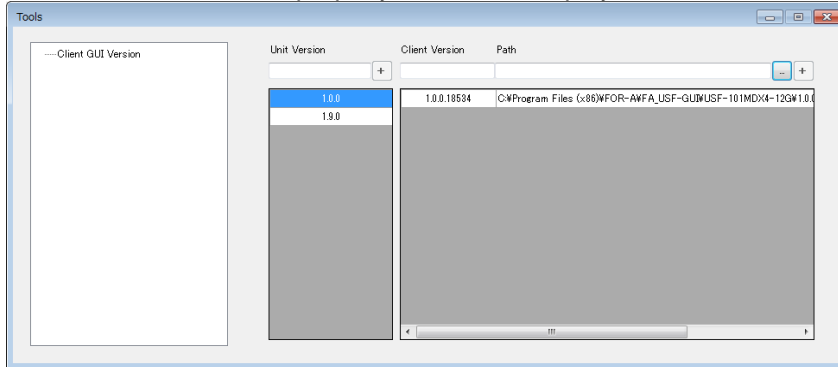


- (4) Enter the following path under **Path** to specify the Windows GUI program:

**C:\Program Files (x86)\FOR-AIFA_USF-GUI\USF-101MDX4_8-12G\1.0.0
USF_101MDX_12G_GUI.exe**

Or, click to the right side of the Path field to specify the above file.

- (5) Click to find and confirm the Windows GUI version corresponding to the USF module.
When the GUI version is properly stored, it is displayed as shown below under **Client Version**.



- (6) Close the Tools window.

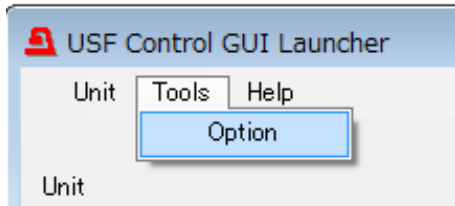
8-4. Specifying USF-105FS-12G GUI Versions

Verify your USF-105FS-12G module version in the Connection Unit list.

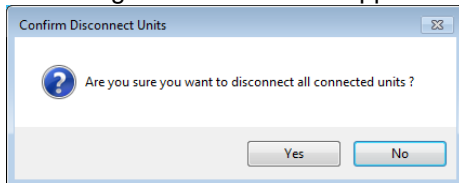
When connecting a USF module with the Launcher, the USF module version is displayed under **Version**. In the following example, the USF-105FS-12G version is displayed as **1.0.0**.

ID	Name	IP Address	Port	Version	Status	Latest GUI Version
1	USF-106UDC-12G	192.168.0.11	50000	1.9.0	Connected	none
2	USF-101MDX4-12G	192.168.0.19	50000	1.0.0	Connected	none

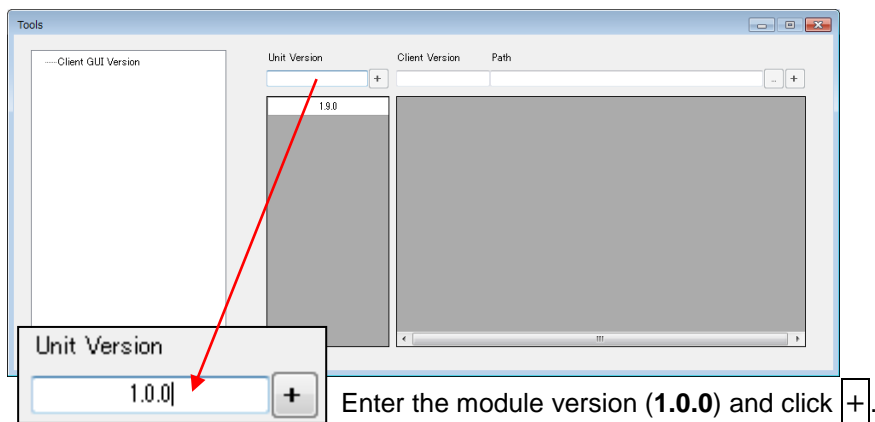
- (1) Select **Tools** -> **Option** in the menu bar.



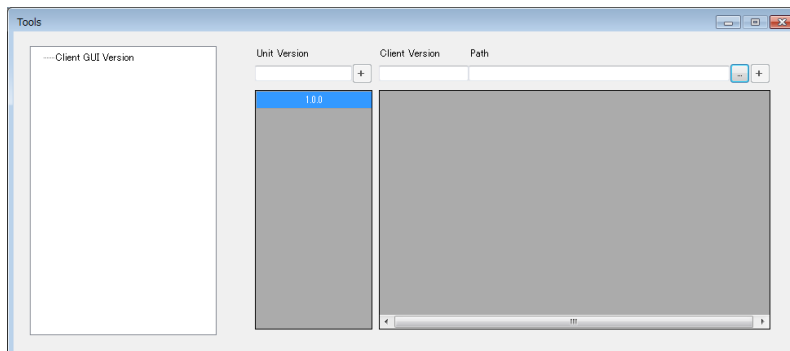
A message as shown below appears. Click **Yes** to disconnect all USF module units.



- (2) The **Tools** window as shown below appears.



- (3) The USF module version is displayed as shown below, when the version is stored in the list.

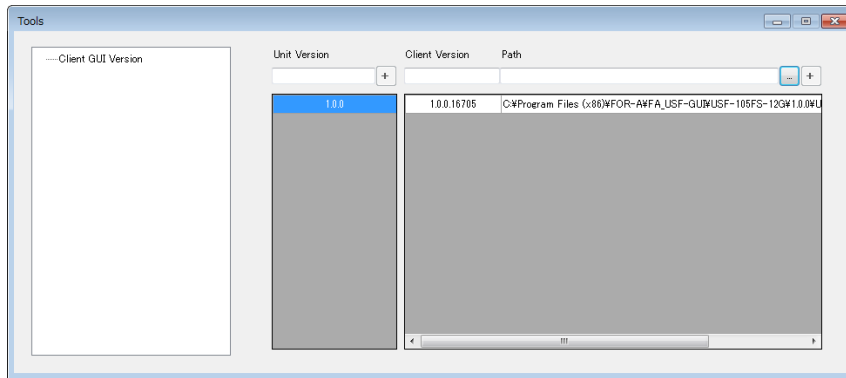


- (4) Enter the following path under **Path** to specify the Windows GUI program:

**C:\Program Files (x86)\FOR-AIFA_USF-GUI\USF-105FS-12G\1.0.0
USF_105FS_12G_GUI.exe**

Or, click to the right side of the Path field to specify the above file.

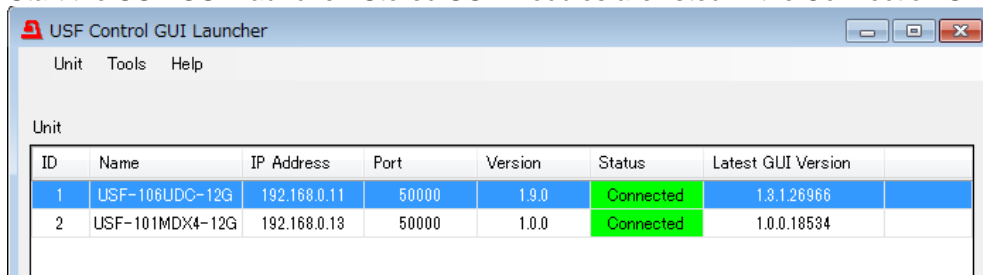
- (5) Click to find and confirm the Windows GUI version corresponding to the USF module.
When the GUI version is properly stored, it is displayed as shown below under **Client Version**.



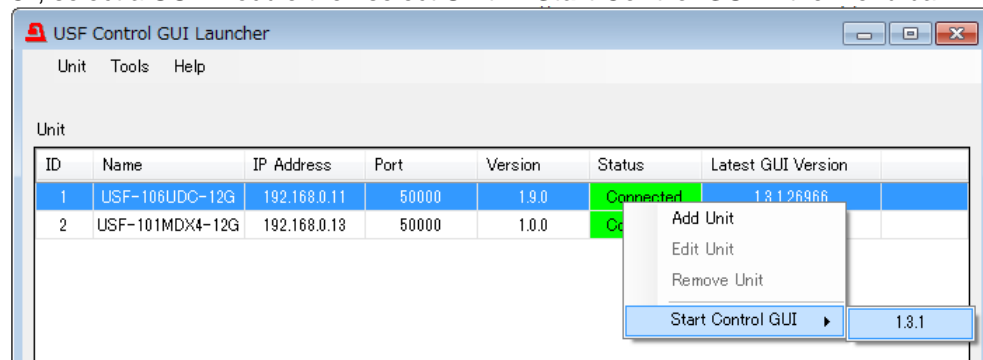
- (6) Close the Tools window.

9. Starting Windows GUI Software

- (1) Start the USF-GUI-Launcher. Stored USF modules are listed in the Connection Unit list.



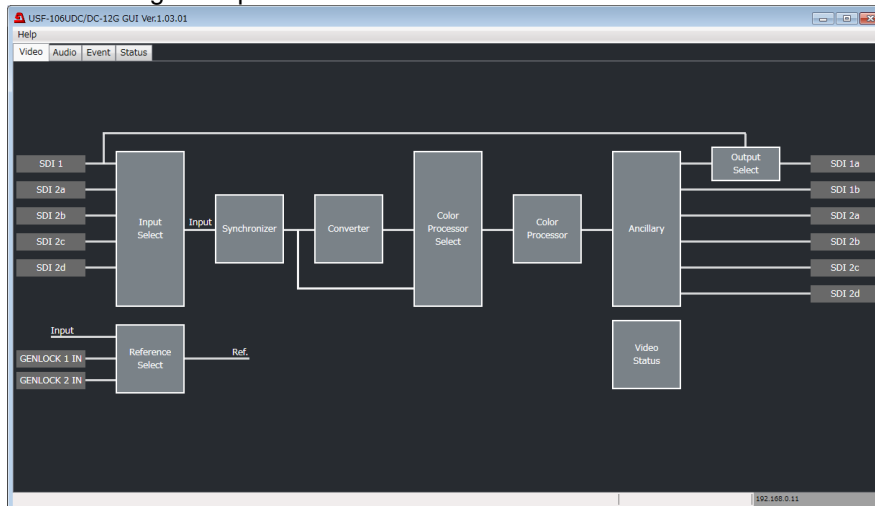
- (2) Select a USF module and right-click the module to select **Start Control GUI** in the context menu. Or, select a USF module then select **Unit -> Start Control GUI** in the menu bar.



- (3) The Windows GUI corresponding to the USF module is launched and displays the control screen as shown below.

Refer to each USF module operation manual for details on Windows GUI operations.

The following example shows the Windows GUI screen for USF-106UDC-12G module.



IMPORTANT

If Windows GUI programs are not launched, remove the following file and re-register correct GUI versions.

Folder: C:\Users\''User name''\AppData\Roaming\FOR-ACOMPANY LIMITED\
 FA_USF Control GUI Launcher
 File: **FAUSFGUILauncher.unitversion.json**

10. Editing the Connection Unit List

10-1. Sorting USF Modules in the List

The USF-GUI-Launcher can sort the Connection Unit list by the following criteria:

- ID
- Name
- IP Address
- Port
- Version
- Status
- Latest GUI Version

Every time a column heading is clicked, the modules in the list are sorted by the heading in ascending or descending order.

◆ Ex) Ascending Sort by ID

USF Control GUI Launcher

Unit Tools Help

Unit

ID	Name	IP Address	Port	Version	Status	Latest GUI Version
1	USF-106UDC-12G	192.168.0.11	50000	1.9.0	Connected	1.3.1.26966
2	USF-101MDX4-12G	192.168.0.13	50000	1.0.0	Connected	1.0.0.18534
3	USF-106UDC-12G	192.168.0.17	50000	1.8.0	Connected	none
4	USF-106UDC-12G	192.168.0.19	50000	1.9.0	Connected	1.3.1.26966

◆ Ex) Descending Sort by ID

USF Control GUI Launcher

Unit Tools Help

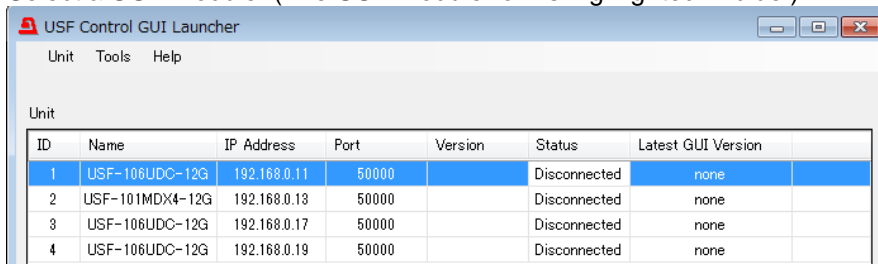
Unit

ID	Name	IP Address	Port	Version	Status	Latest GUI Version
4	USF-106UDC-12G	192.168.0.19	50000	1.9.0	Connected	1.3.1.26966
3	USF-106UDC-12G	192.168.0.17	50000	1.8.0	Connected	none
2	USF-101MDX4-12G	192.168.0.13	50000	1.0.0	Connected	1.0.0.18534
1	USF-106UDC-12G	192.168.0.11	50000	1.9.0	Connected	1.3.1.26966

10-2. Editing USF Module Information

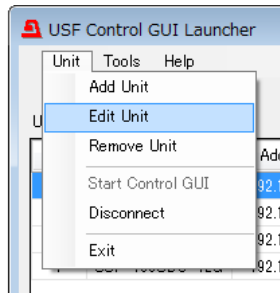
USF module information can be changed when no USF modules are connected (**Disconnected** is displayed under **Status**).

- (1) Select a USF module. (The USF module row is highlighted in blue.)

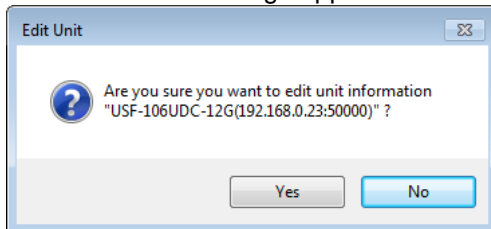


ID	Name	IP Address	Port	Version	Status	Latest GUI Version
1	USF-106UDC-12G	192.168.0.11	50000		Disconnected	none
2	USF-101MDX4-12G	192.168.0.13	50000		Disconnected	none
3	USF-106UDC-12G	192.168.0.17	50000		Disconnected	none
4	USF-106UDC-12G	192.168.0.19	50000		Disconnected	none

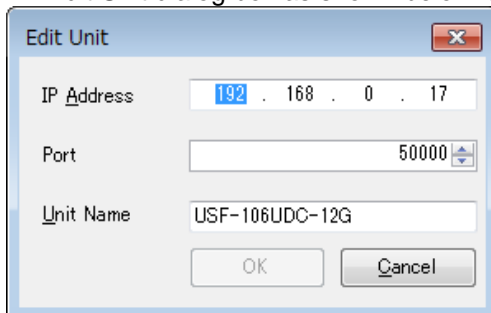
- (2) Select **Unit** -> **Edit Unit** in the menu bar.



- (3) A confirmation message appears. Click **Yes**.



- (4) An Edit Unit dialog box as shown below is displayed.

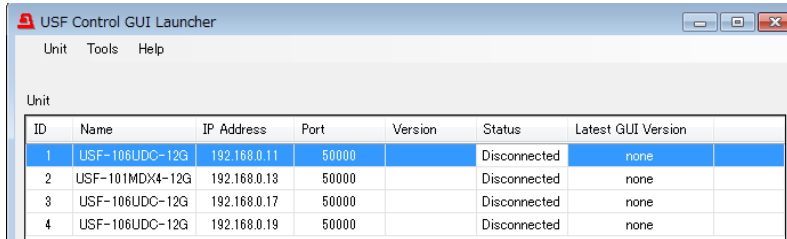


- (5) Change items as needed, then click **OK**.

10-3. Deleting USF Modules from the Connection List

USF module information can be changed when no USF modules are connected (**Disconnected** is displayed under **Status**).

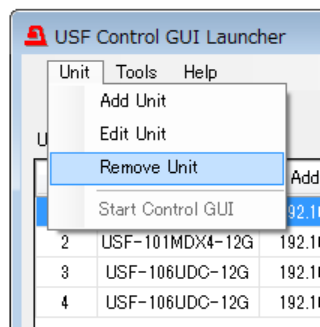
- (1) Select a USF module to be deleted in the Connection Unit list.



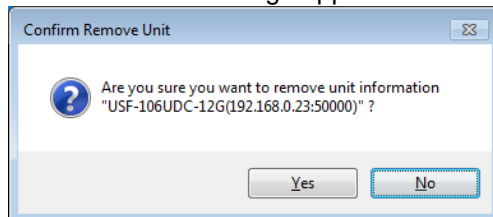
The screenshot shows the 'USF Control GUI Launcher' window with a menu bar (Unit, Tools, Help) and a table titled 'Unit'. The table contains the following data:

ID	Name	IP Address	Port	Version	Status	Latest GUI Version
1	USF-106UDC-12G	192.168.0.11	50000		Disconnected	none
2	USF-101MDX4-12G	192.168.0.13	50000		Disconnected	none
3	USF-106UDC-12G	192.168.0.17	50000		Disconnected	none
4	USF-106UDC-12G	192.168.0.19	50000		Disconnected	none

- (2) Select **Unit** -> **Remove Unit** in the menu bar.



- (3) A confirmation message appears.



- (4) Click **Yes** to delete the USF module from the list.