

INSTALLATION GUIDE

MFR-SRCPU

Redundant CPU Card for MFR-1616R/3216/3232

1st Edition

Upon Receipt

Unpacking

MFR-SRCPU cards and their accessories are fully inspected and adjusted prior to shipment. Check your received items against the packing lists below. Check to ensure no damage has occurred during shipment. If damage has occurred, or items are missing, inform your supplier immediately.

◆ Packing List


ITEM	QTY	REMARKS
MFR-SRCPU	1 set	Redundant CPU Card for MFR-1616R/3216/3232 IF card x1 CPU card x1
Flexible flat cable	2	Used to connect IF and CPU Cards.
Shielded plate 1	1	
Shielded plate 2	1	
Double SEMS screw	7	Used to secure the Redundant CPU Card.
Stud	4	
Binding screw	8	Used to secure shielded plates.
Installation Guide	1	This Guide Book

Table of Contents

1. Overview.....	4
2. Installing the MFR-SRCPU.....	4
2-1. Opening the Top Panel	4
2-2. Mounting the MFR-SRCPU.....	5
3. Verifying the Installation	8

1. Overview

MFR-SRCPU is a CPU card for MFR-1616R/3216/3232 units. An MFR-1616R/3216/3232 has two CPU slots and comes with a CPU card installed in one slot as the standard configuration. Installing an optional MFR-SRCPU allows the unit to keep running in the event that one of the CPU cards were to fail.

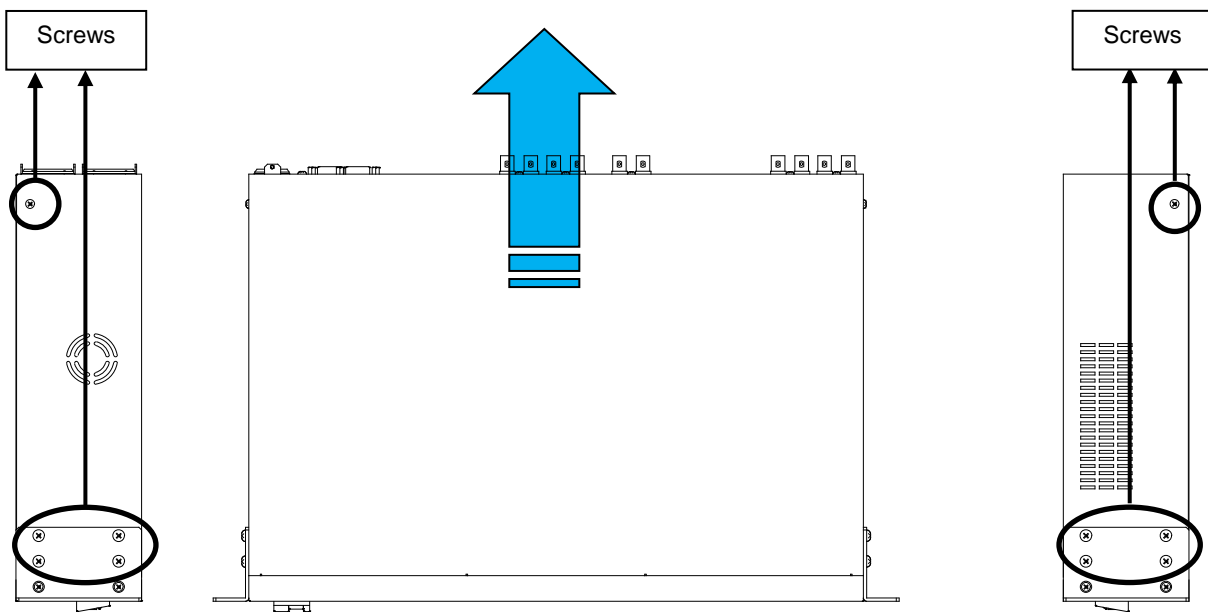
 CAUTION	Installing this option requires the unit interior to be accessed by opening the panel. Installation should only be performed by qualified technical personnel. The power should be turned OFF and all unit power cords disconnected before an installation is performed.
-----------------------------------------------------------------------------------------------------	--------------------------------------------------------------------------------------------------------------------------------------------------------------------------------------------------------------------------------------------------------------------------

2. Installing the MFR-SRCPU

2-1. Opening the Top Panel

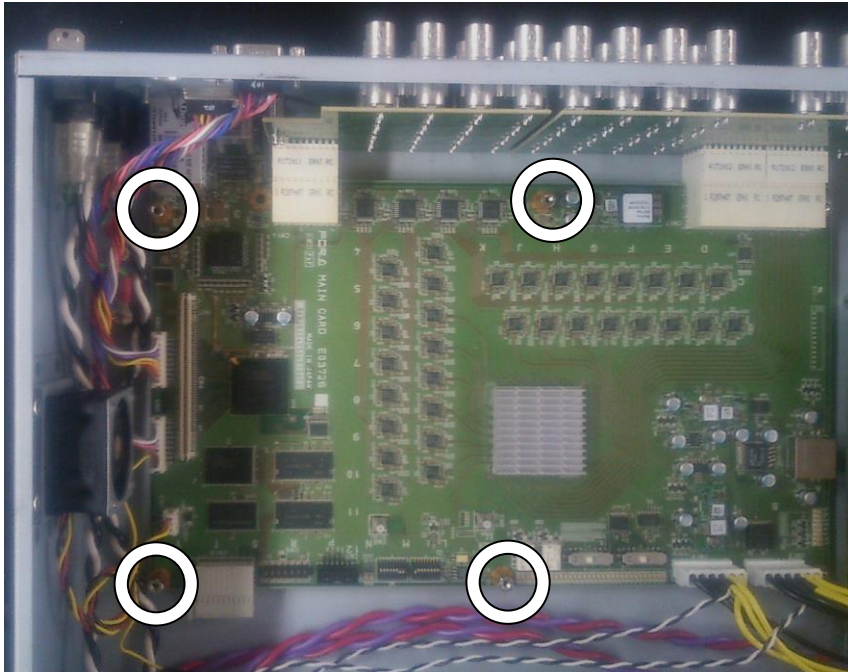
(1) Remove the 10 screws on the left and right sides of the MFR-1616R/3216/3232. (The figure below shows an MFR-1616R.)

(2) Slowly lift and remove the top panel.

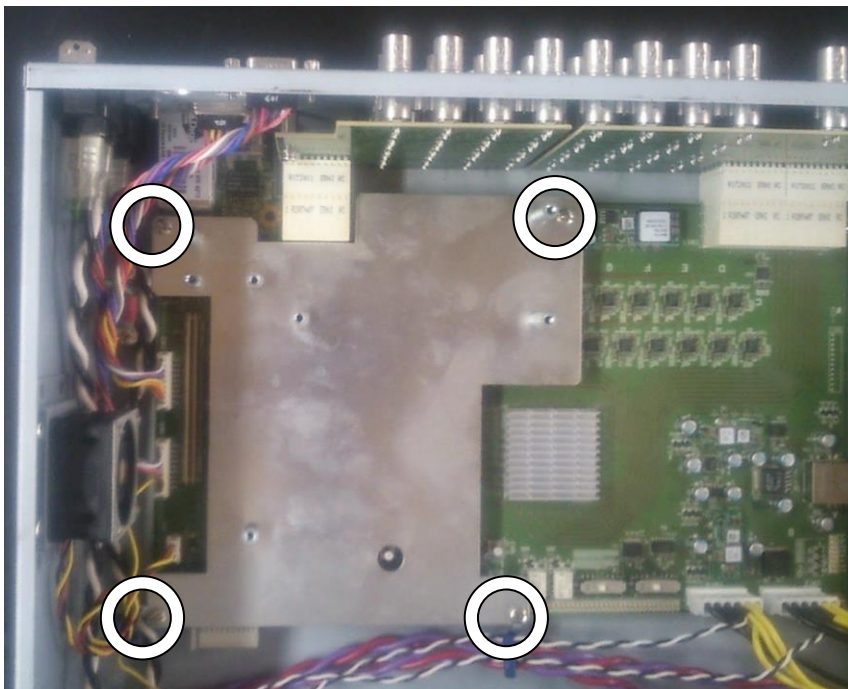


2-2. Mounting the MFR-SRCPU

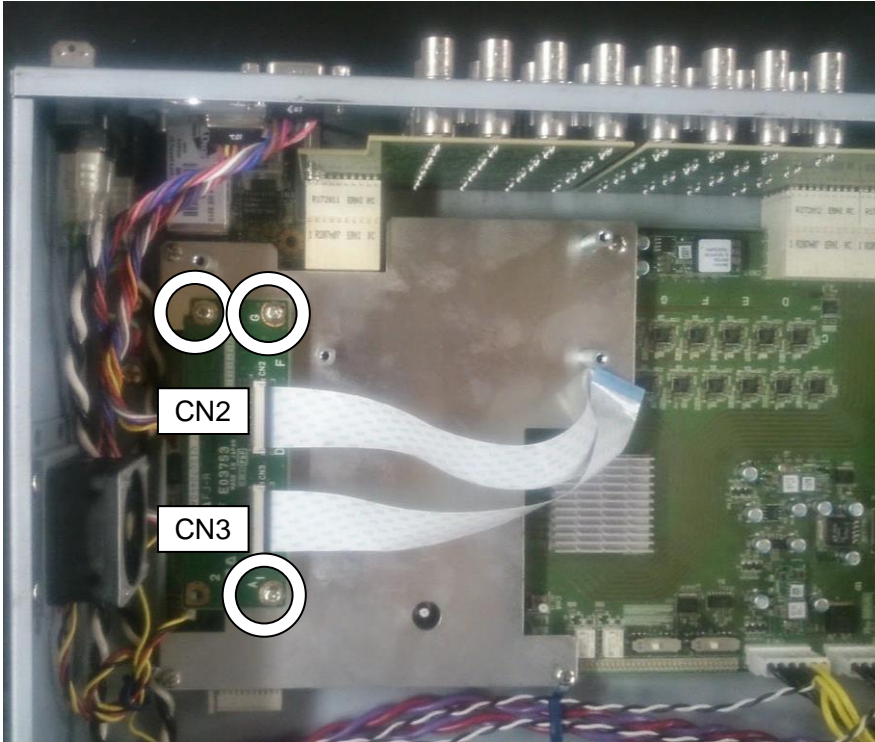
(1) Remove the four (4) double SEMS screws circled in the figure below and attach the supplied studs.



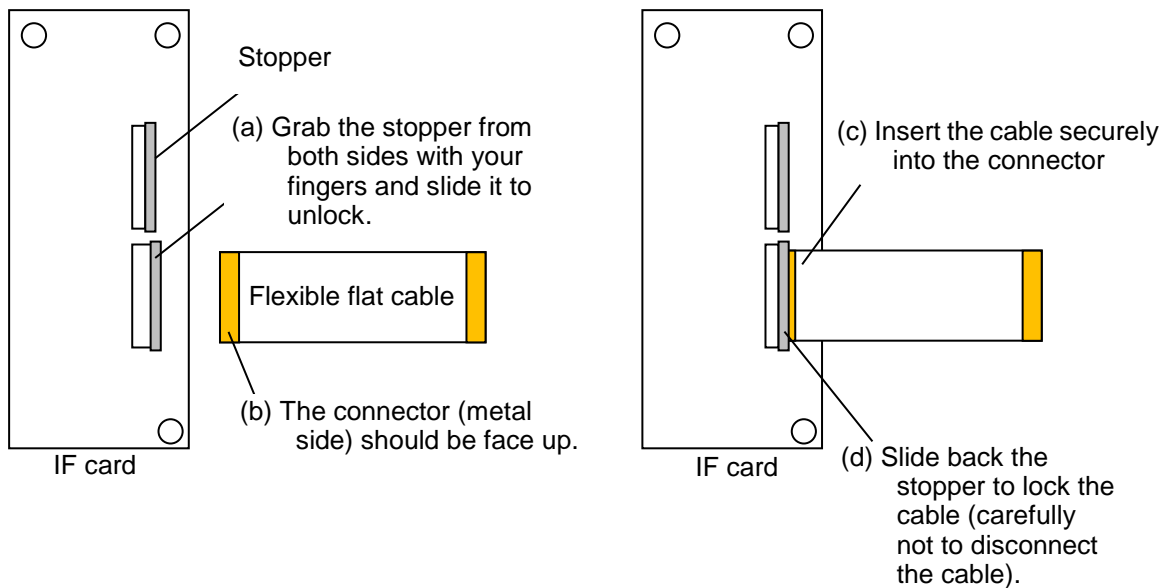
(2) Mount shield plate 1 and secure it with four (4) binding screws.



- (3) Take out the MFR-SRCPU from the packaging box.
- (4) Mount and secure the IF card with three (3) double SEMS screws.



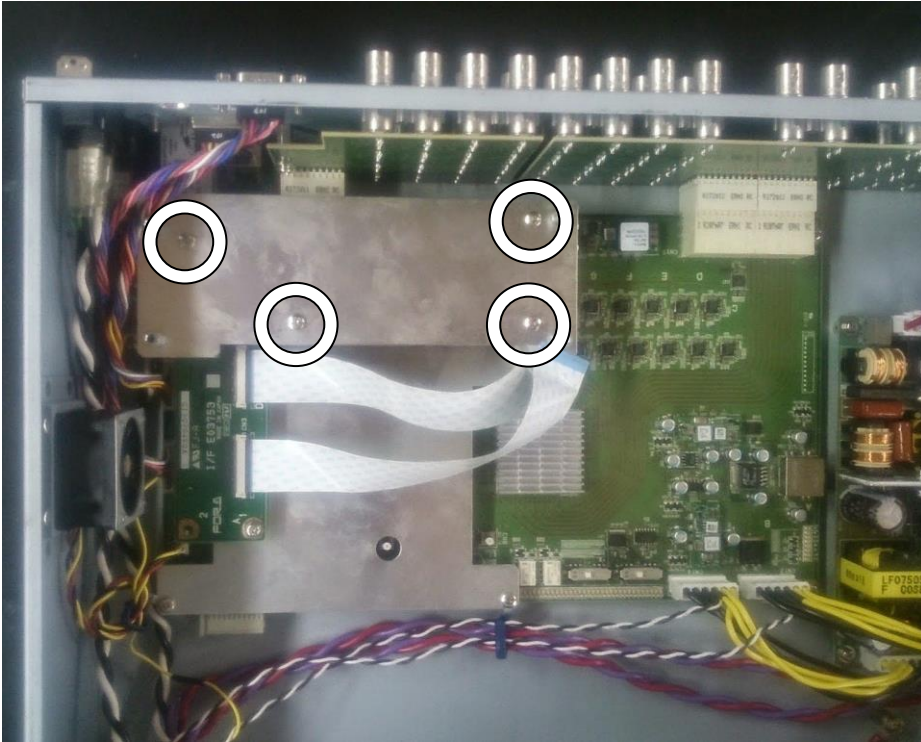
- (5) Follow steps (a) to (d) below to connect flexible flat cables to CN2 and CN3 on the IF card.



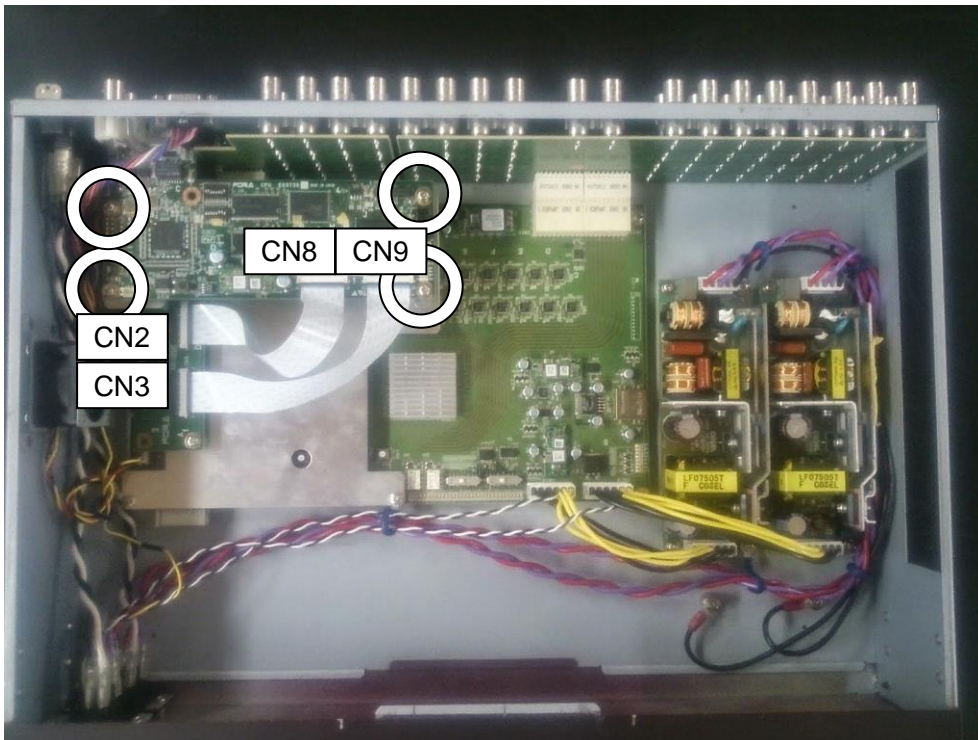
IMPORTANT

Be sure that the cable connector (metal side) is face up. Otherwise, the card will not operate.

(6) Mount shield plate 2 and secure it with four (4) binding screws.



(7) Mount and secure the CPU card with four (4) double SEMS screws.



(8) Connect the flexible flat cables to CN8 and CN9 on the CPU card (in the same manner as when connecting to the IF card).

(9) Close and secure the top panel with the removed screws.

(10) Connect the power cord and turn on the power.

Installation is complete.

3. Verifying the Installation

Follow the steps below to verify that the MFR-SRCPU is properly installed.

- (1) Launch a browser (e.g. Internet Explorer) and access the PC-LAN port address “http://192.168.1.12”.



- (2) After accessing the address, a username and a password will be requested. Enter the following username and password.

Username: user

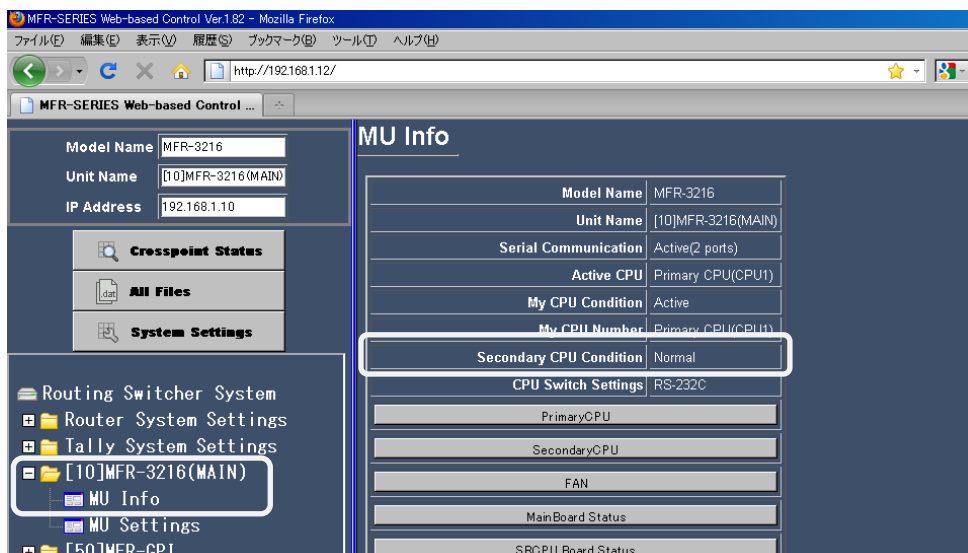
Password: password (default)



IMPORTANT

The above address, username, and password are default settings. If settings have been changed, enter the new address, username and password.

- (3) In the **System Settings** tree in the Web-based Control screen, open the connected main unit (**MFR-XXXX**) > **MU Info** and verify that **Normal** is shown under **Secondary CPU Condition**.



Warning

This equipment has been tested and found to comply with the limits for a Class A digital device, pursuant to Part 15 of FCC Rules. These limits are designed to provide reasonable protection against harmful interference when the equipment is operated in a commercial environment. This equipment generates, uses, and can radiate radio frequency energy and, if not installed and used in accordance with the instruction manual, may cause harmful interference to radio communications. Operation of this equipment in a residential area is likely to cause harmful interference, in which case the user will be required to correct the interference at his own expense.



FOR-A COMPANY LIMITED

Head Office 3-8-1 Ebisu, Shibuya-ku, Tokyo 150-0013, Japan
Overseas Division Tel: +81(0)3 3446 3936 Fax: +81(0)3 3446 1470
Japan Branch Offices Osaka/Okinawa/Fukuoka/Hiroshima/Nagoya/Sendai/Sapporo
R&D/Production Sakura Center/Sapporo Center

FOR-A Corporation of America

11155 Knott Ave., Suite G&H, Cypress, CA 90630, USA.
Tel: +1 714 894 3311 Fax: +1 714 894 5399

FOR-A Corporation of America East Coast Office

2 Executive Drive, Suite 670, Fort Lee Executive Park, Fort Lee, NJ 07024, USA
Tel: +1 201 944 1120 Fax: +1 201 944 1132

FOR-A Corporation of America Distribution & Service Center

2400 N.E. Waldo Road, Gainesville, FL 32609, USA
Tel: +1 352 371 1505 Fax: +1 352 378 5320

FOR-A Corporation of America Miami Office

5200 Blue Lagoon Drive, Suite 760, Miami, FL 33126, USA
Tel: +1 305 931 1700 Fax: +1 305 264 7890

FOR-A Corporation of Canada

1131A, Leslie Street Suite 209, Toronto, Ontario M3C 2J6, Canada
Tel: +1 416 977 0343 Fax: +1 416 977 0657

FOR-A Europe S.r.l.

Via Volturmo 37, 20861 Brugherio MB, Italy
Tel: +39 039 879 778 Fax: +39 039 878 140

FOR A UK Limited

Trident Court, 1 Oakcroft Road, Chessington, KT9 1BD, UK
Tel: +44 (0)20 3044 2935 Fax: +44(0)20 3044 2936

FOR-A Italia S.r.l.

Via Volturmo 37, 20861 Brugherio MB, Italy
Tel: +39 039 881 086/103 Fax: +39 039 878 140

FOR-A Corporation of Korea

1007, 57-5, Yangsan-ro, Yeongdeungpo-gu, Seoul 150-103, Korea
Tel: +82 (0)2 2637 0761 Fax: +82 (0)2 2637 0760

FOR-A China Limited

708B Huateng Building, No. 302, 3 District, Jinsong, Chaoyang, Beijing 100021, China
Tel: +86 (0)10 8721 6023 Fax: +86 (0)10 8721 6033

FOR-A Middle East-Africa Office

Dubai Media City, Aurora Tower, Office 1407, P.O. Box 502688, Dubai, UAE
Tel: +971 (0)4 551 5830 Fax: +971 (0)4 551 5832

Agiv (India) Private Limited (FOR-A India)

85, V.N. Purav Marg Sion-Chunabhatti (E) Mumbai - 400 022
Tel: +91 22 2405 1258 Fax: +91 22 2405 0007