

INSTALLATION GUIDE

HVS-2000PSM

Power Supply Units for Power Redundancy

1st Edition

Upon Receipt

HVS-2000PSM units and their accessories are fully inspected and adjusted prior to shipment. Check your received items against the packing lists below. Check to ensure no damage has occurred during shipment. If damage has occurred, or items are missing, inform your supplier immediately.

◆ **HVS-2000PSM Box**

ITEM	QTY	REMARKS
HVS-2000PSM	1	
AC Cord (with AC cord clamp)	1 set	
Bind-head screw for fixing HVS-2000PSM	2	M3×6mm
Installation guide	1	This manual

◆ **Required tool**

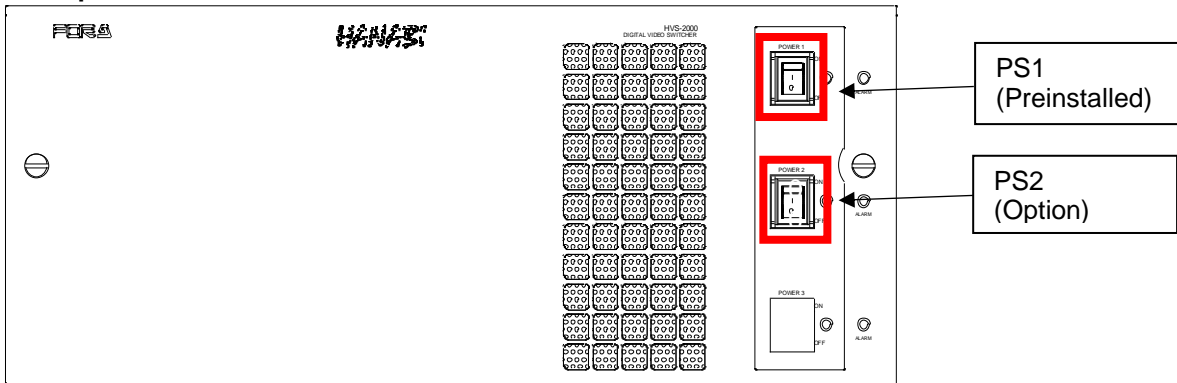
Flathead driver

Phillips driver for M3

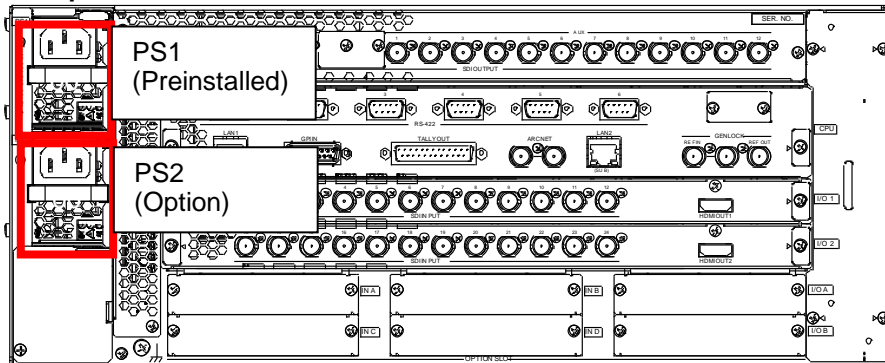
1. Power Unit Installation Slots

HVS-2000PSM is a redundant power unit for HVS-2000.

Front panel



Rear panel



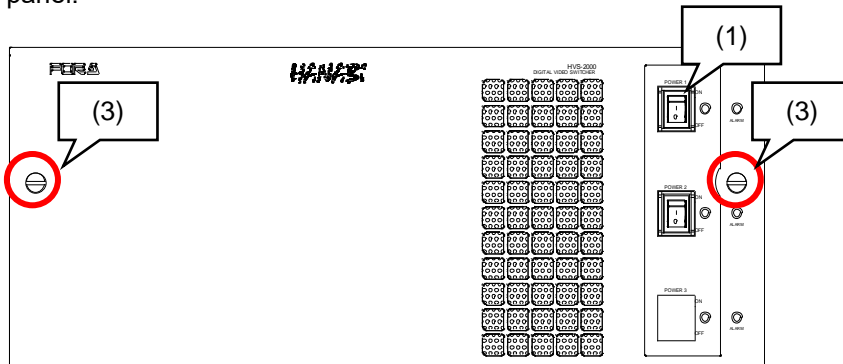
2. Redundant Power Unit Installation / Replacement

This chapter describes the procedure for making the HVS-2000 power supply a redundant configuration (new installation) and the procedure for replacing the HVS-2000 power supply.

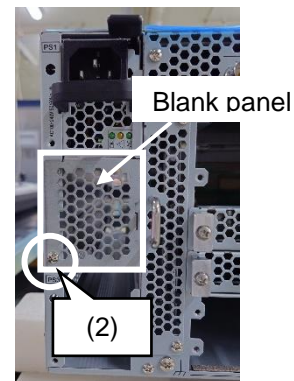
2-1. How to Install a New Power Unit

The following procedure shows how to install HVS-2000PSM unit (PS2) on the HVS-2000 for a redundant configuration.

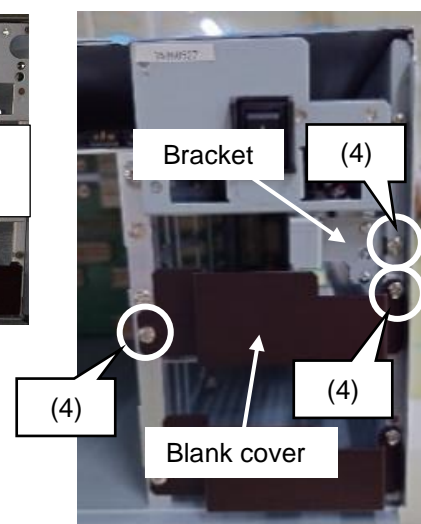
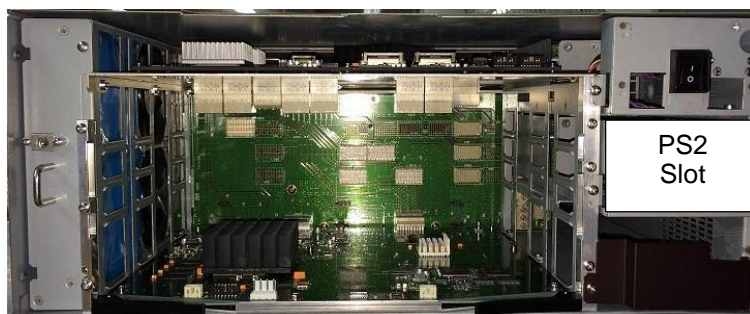
- (1) Turn OFF the POWER 1 switch on the front panel and unplug the power cord from the rear panel.



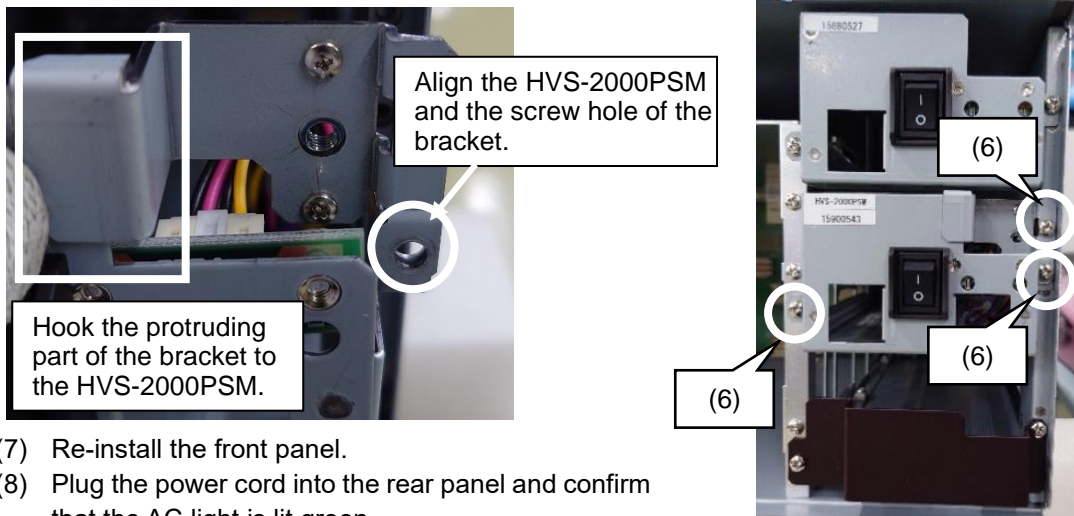
- (2) Remove one of the blank panel fixing screws on the back of the HVS-2000 and remove the blank panel.
- (3) Completely loosen the two screws on the front panel and remove the front panel.



- (4) Remove the PS2 slot bracket and the three fixing screws on the blank cover, and remove the bracket and the blank cover. Screws will be used later, so be careful not to lose them.



- (5) Insert the HVS-2000PSM all the way to the back in PS2 slot.
- (6) Install the bracket and screws removed in (4) referring to the illustration below.



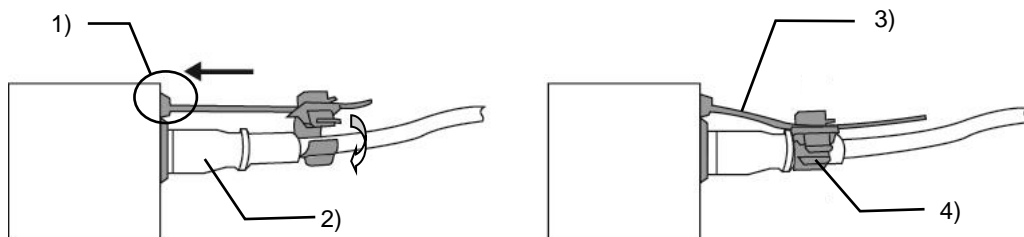
- (7) Re-install the front panel.
- (8) Plug the power cord into the rear panel and confirm that the AC light is lit green.



- (9) Secure the power cord with the supplied AC cord clamp. (See below for installation instructions.)

AC Cord Clamp Installation

- 1) Insert the anchor into the hole next to the AC inlet.
- 2) Plug in the AC cord.
- 3) Adjust the strap length to fit.
- 4) Wrap the AC cord clamp around the AC cord.
- 5) Gently pull on the AC cord to ensure it has been securely plugged in.



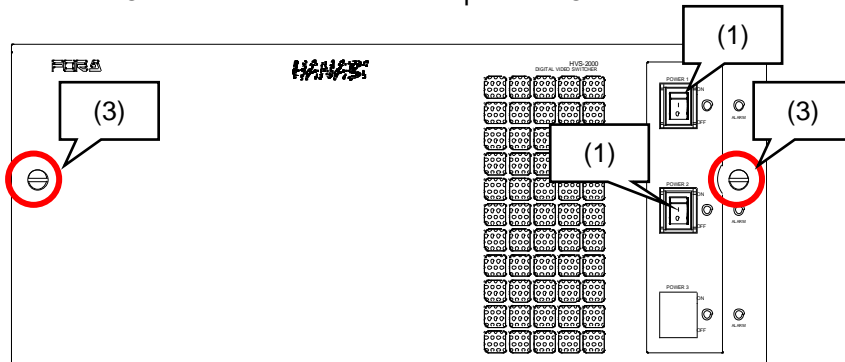
- (10) Turn on the POWER 2 switch on the front panel.
- (11) Open the [SETUP > STATUS > ALARM] menu in the GUI and confirm that **SUPPLIED** is displayed in POWER SUPPLY2 of the MU.

A new power unit installation is now complete.

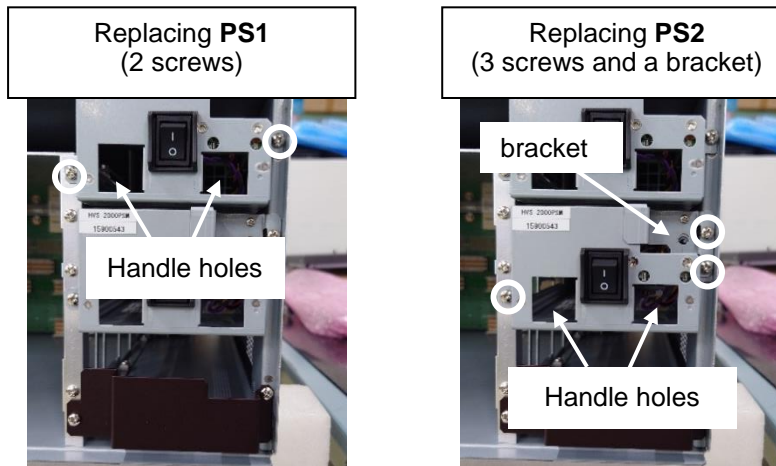
2-2. How to Replace a Power Unit

The following procedure shows how to replace the power unit of the HVS-2000 to a new power unit set.

- (1) Turn all POWER switches on the front panel to OFF.



- (2) Disconnect all power cords on the rear panel.
- (3) Completely loosen the two screws on both sides of the front panel and remove the front panel.
- (4) Remove the fixing screws and the bracket from the power supply unit, referring to the illustration below. Screws will be used later, so be careful not to lose them.



- (5) Place your fingers over the handle holes of the power supply unit to be replaced and pull the power supply unit toward you.
- (6) Place the new power supply unit into the slot and insert it all the way to the back.
- (7) Install the screws and bracket removed in step (4).
- (8) Re-install the front panel.
- (9) Plug the power cord into the rear panel and check that the AC light is lit green.



- (10) Secure the power cord with the supplied AC cord clamp. (See "AC Cord Clamp Installation" <p. 5>.)
- (11) Turn on all POWER switches on the front panel.
- (12) Open the [SETUP > STATUS > ALARM] menu in the GUI.
If PS1 has been replaced, select POWER SUPPLY1 on the MU, and
if PS2 has been replaced, select POWER SUPPLY2 on the MU, and confirm that **SUPPLIED** is displayed.

A power unit replacement is now complete.



FOR-A COMPANY LIMITED

Head Office 3-8-1 Ebisu, Shibuya-ku, Tokyo 150-0013, Japan
Overseas Division Tel: +81(0)3-3446-3936 Fax: +81(0)3-3445-5116

FOR-A Corporation of America Corporate Office/Service Center

11155 Knott Ave., Suite G, H & I, Cypress, CA 90630, U.S.A.
Tel: +1 714-894-3311 Fax: +1 714-894-5399

FOR-A Corporation of America Northeast Office

1360 Clifton Ave., Clifton, NJ 07012, U.S.A.
Tel: +1 973-220-8471 Fax: +1 714-894-5399

FOR-A Corporation of America Southeast Office

Tel: +1-305-773-7608

FOR-A Corporation of America Support Center

2400 N.E. Waldo Road, Gainesville, FL 32609, U.S.A.
Tel: +1 352-371-1505 Fax: +1 714-894-5399

FOR-A Latin America and the Caribbean Miami Office

Tel: +1 657-600-5759

FOR-A Latin America and the Caribbean Sao Paulo Office

Tel: +55 (0)11-99913-3751

FOR-A Europe S.r.l.

Via Volturmo, 37, 20861, Brugherio MB, Italy
Tel: +39 (0)39-916-4811

FOR A UK Limited

Trident Court, 1 Oakcroft Road Chessington, KT9 1BD, U.K.
Tel: +44 (0)20-3044-2935 Fax: +44 (0)20-3044-2936

FOR-A Italia S.r.l.

Via Volturmo, 37, 20861, Brugherio MB, Italy
Tel: +39 (0)39-881-086

FOR-A Corporation of Korea

1007, 57-5, Yangsan-ro, Yeongdeungpo-gu, Seoul 07271, Korea
Tel: +82 (0)2-2637-0761 Fax: +82 (0)2-2637-0760

FOR-A China Limited

1618 Huateng Building, No. 302, 3 District, Jinsong, Chaoyang, Beijing 100021, China
Tel: +86 (0)10-8721-6023 Fax: +86 (0)10-8721-6033

FOR-A Middle East Africa Office

Aurora Tower, Office 1407, Dubai Media City, P.O. Box 502688, Dubai, UAE
Tel: +971 (0)4 551 5830 Fax: +971 (0)4 551 5832

FOR-A India Private Limited. Mumbai Office

2nd Floor, Valecha Chambers, Link Road, Andheri (W), Mumbai 400053, India
Tel: +91-(0)22-2673-3623 Fax: +91-(0)22-2639-3415

FOR-A India Private Limited. Delhi Office

8th floor, World Trade Tower, Sector-16, Noida, Uttar Pradesh 201301, India
Tel: +91-(0)12-0423-8674

FOR-A South East Asia Office

Studio 09, Rm. A1, 3/F., Phase 1, Hang Fung Ind. Bldg., 2G Hok Yuen St., Hung Hom, Hong Kong
Tel: +852 2110-1352