

Integrated Media Platform with UnLimited StructurE

FOR-A IMPULSE®

FOR-A
IMPULSE®



Function-integrated live production solution that enables flexible system construction and efficient operation with a software-defined architecture within a MoIP system. The functions of a wide range of FOR-A products have been converted into software and integrated into a single box. Flexible system-building and operation are realized with an intuitive workflow UI.

Key takeaways

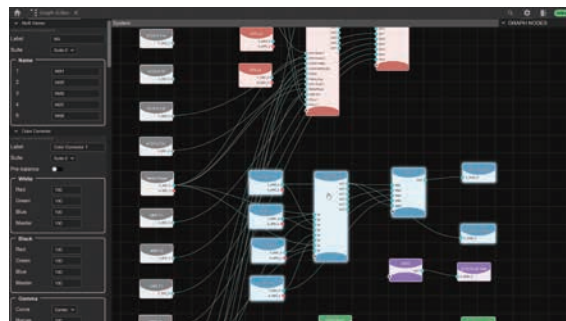
1. “Studio in a box” realizes a flexible system construction with efficient operation.

The functions of various FOR-A products that are required for video/live production have been converted into software and integrated into a single box (common platform). Each individual software-based function is defined as a Node. An intuitive web-based GUI “Graph Editor” allows users to expand and reduce the system by connecting Nodes. Operation/control is possible both on the web GUI and using a hard panel.



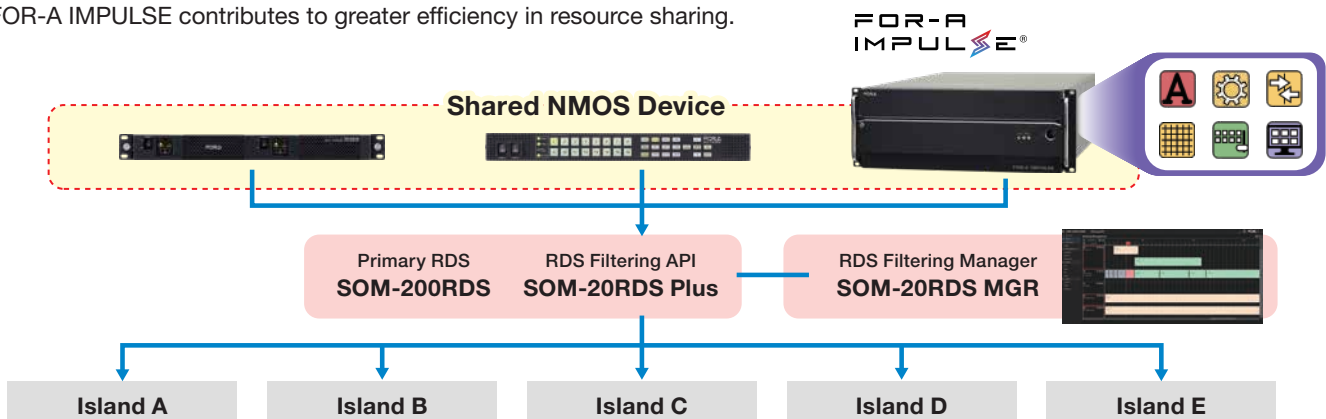
2. Intuitive web GUI “Graph Editor” for flexible workflow design

A user friendly web GUI “Graph Editor” allows the user to configure the workflow flexibly and visually. Everything can be controlled remotely, and conventional hardware surface/control panel can be adapted as well to support operation with a hard control panel.



3. Utilize as cost effective sharing resources together with Hi-RDS

Hi-RDS enables common resource sharing between different vendor islands, reducing equipment cost and increasing productivity by assigning each node to each island under schedule management. Since a single box can serve a wide range of roles, FOR-A IMPULSE contributes to greater efficiency in resource sharing.



Features

■ Efficient system operation and improved cost-effectiveness

By integrating and operating software-based functions on a common platform, the number of devices and the number of connections between devices can be reduced to simplify, improve efficiency, and reduce costs and labor. This enables lean operation. GUIs that can be operated intuitively also contribute to efficient operation.

■ Flexible system construction

Systems can be flexibly enlarged or reduced as required. A single system can be used in a variety of applications.

■ Highly flexible operations

With just a web browser, all operations can be performed remotely. An intuitive UI allows users to operate, manage, support, and maintain a video production workflow at anytime, anywhere.

■ Secure environment

Each function is grouped within a Suite function group, and access privileges are managed for each group, enabling the secure operation of multiple systems.

■ Creation of New Business Opportunities

Flexible system configuration enables the continuous expansion and modification of existing systems and deployment of new applications and services.

Node

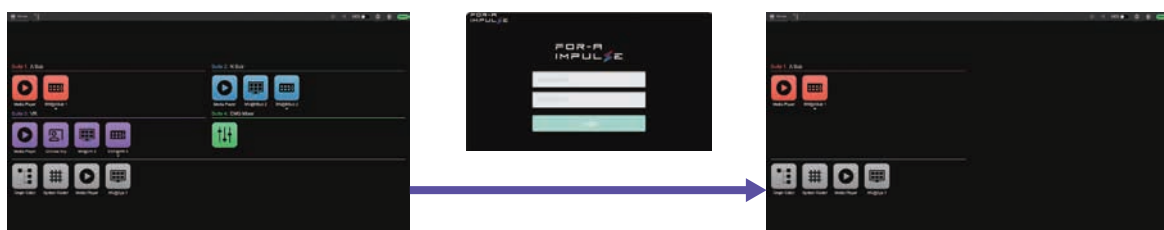
The basic unit of media processing for a software-defined function. Connect a Node with the Graph Editor to build a pipeline, enabling flexible media processing. The system can be easily changed, enlarged, or reduced according to the operation, and it can be utilized across several MoIP systems. Some Nodes, such as Video Switcher Node and Audio mixer Node, have more than one Node and called Composite Node.

Media edit pass (Pipeline)



Suite

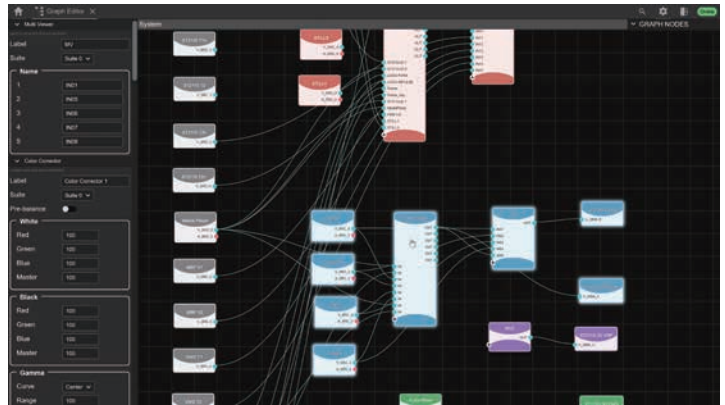
Each user is assigned a Role, and the Suite manages the access permissions for each Role. Users can only access the Suite to which their Role has access.



GUI

■ Graph Editor GUI

A GUI that allows system construction with intuitive visual operation. You can select and arrange the required Node and change the connectivity between Nodes to build and change any system. The Graph Editor provides real-time video previews with mouse-over views and smooth transitions between Node and GUI with shortcuts.



■ Router MAX GUI

Connectivity switching between Node in the system hierarchy can be done in the same way as with baseband routers and broadcast controllers. The grouping function allows you to switch between video/audio/metadata or video/key pairs simultaneously.



Introduction of Nodes

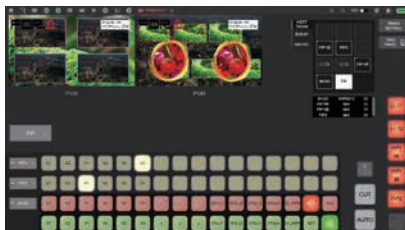
■ Switcher Node

A FOR-A switcher's video composite engine and effects are software-defined as a Node so that the Switcher Node can be flexibly structured. A Node can be combined with intuitive controls to add complex compositing and effects.

■ Switcher Node – GUI

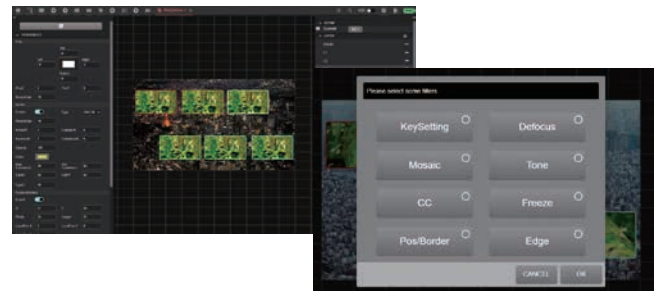
Switcher Panel GUI

Panels that support basic operations can be operated via hardware panels for the purpose of assisting with simple operations or failures, and for backing up. Remote control is possible while watching the live image return feed.



Scene Editor GUI

Users can add layers by dragging and dropping, grouping layers, and adding video filters.



■ Hardware panels

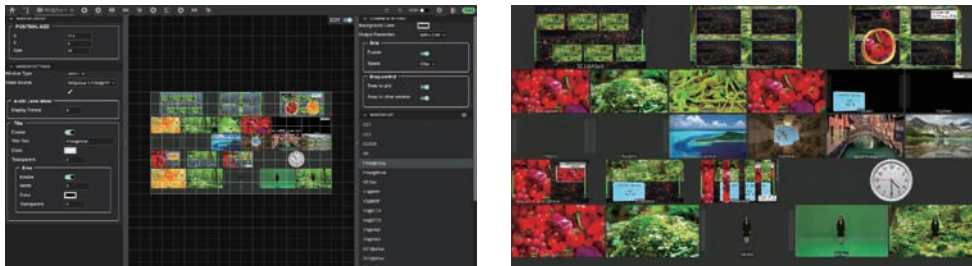
Both the software panel and the hardware panel can be connected. The use of familiar panels to reduces the operational load.

* Please contact your FOR-A dealer for connectable hard panels.

MV Node & Layout Editor

MV can be output at 4K resolution even with HD systems. The Layout Editor allows intuitive and free layout manipulation. Items can be arranged in the same way as the FOR-A MV Series*. The system status can be checked from anywhere in the monitoring mode.

* The schedules that can be supported vary depending on the item.



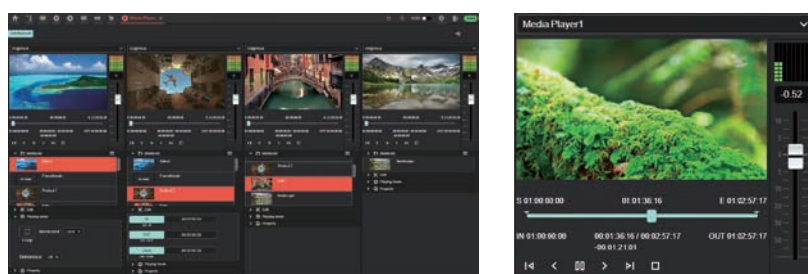
Chroma KEY Node

Can be used for front and back color correction and key composition. The color pick operation allows you to select the color of the key composition while checking the blue screen material feedback.



Media Player Node

Selects and plays internal content and previews the recorded video. Users can also create a new clip by setting a in/out point for the clip. Contents can be restricted by Suite function, enabling secure content operation.



Audio Mixer Node

Audio Mixer Node is a composite Node like the switcher Node. It can be utilized as an EMG Mixer when operating with an external Mixer. It can also be routed to the main audio mixer to output a return signal synchronized with the video. Control via external audio console is available.





FOR-A COMPANY LIMITED www.for-a.com

ISO 9001 and 14001 certified
(Sakura R&D)

Head Office:

3-8-1 Ebisu, Shibuya-ku, Tokyo 150-0013, Japan
Tel: +81 (0)3-3446-3936

**FOR-A Corporation of America
Corporate Office/Service Center:**

11155 Knott Ave., Suite G, H & I, Cypress, CA 90630, U.S.A.
Tel: +1 714-894-3311

FOR-A Corporation of America Northeast Office:

Tel: +1 973-220-8471

FOR-A Corporation of America Southeast Office:

Tel: +1 305-773-7608

FOR-A Corporation of America Support Center:

2400 N.E. Waldo Road, Gainesville, FL 32609, U.S.A.
Tel: +1 352-262-5779

FOR-A Latin America and the Caribbean Miami Office:

Tel: +1 657-600-5759

FOR-A Latin America and the Caribbean Sao Paulo Office:

Tel: +55 11-99913-3751

FOR-A Latin America and the Caribbean Mexico City Office:

Tel: +52-55-5072-4969

FOR-A Europe S.r.l.:

Via Volturmo, 37, 20861 Brugherio MB, Italy
Tel: +39 (0)39-916-4811

FOR-A UK Limited:

Trident Court, 1 Oakcroft Road, Chessington, KT9 1BD, UK
Tel: +44 (0)20-3044-2935

FOR-A Italia S.r.l.:

Via Volturmo, 37, 20861, Brugherio MB, Italy
Tel: +39 3483132776

FOR-A Corporation of Korea:

1007, 57-5, Yangsan-ro, Yeongdeungpo-gu, Seoul 07271, Korea
Tel: +82 (0)2-2637-0761

FOR-A China Limited:

1618A Huateng Building, No. 302, 3 District, Jinsong, Chaoyang,
Beijing 100021, China
Tel: +86 (0)10-8721-6023

FOR-A Middle East-Africa Office:

DSC Tower, Office 207, Dubai Studio City,
P.O. Box 502688, Dubai, UAE
Tel: +971 (0)4-551-5830

FOR-A India Private Limited Corporate Office:

Unit No: 800, World Trade Tower, Sector-16, Noida-201301, Uttar
Pradesh, India
Tel: +91-120-4238674 / +91-120-4252330

FOR-A India Private Limited Mumbai Office:

202-203, Wellington Business Park No-01, Marol, Off, Andheri Kurla
Road, Andheri East, Mumbai-400059, Maharashtra, India
Tel: +91 22-49795570

FOR-A South East Asia Hong Kong Office:

Studio 09, Rm. A1, 3/F., Phase 1, Hang Fung Ind. Bldg., 2G Hok
Yuen St., Hung Hom, Hong Kong
Tel: +852-2110-9227

FOR-A South East Asia Singapore Office:

Tel: +65-8686-8086