

HD/SD Character Generator **VTW-330HS**



Compact and Affordable Character Generator

With its lightweight, compact design, the VTW-330HS is an extremely portable HD/SD-supporting character generator perfect for relay applications. The software offers a rich array of drawing functions, more than 260 transition functions, template control, general-purpose file interface and more. All the functions you need are packed into an extremely compact case. With its excellent cost-performance, the VTW-330HS makes CG production affordable for all.

Major Features

- 1U size compact design excellent for relay applications. The vibration-resistant case makes it perfect for portable and on-board applications.
- More than 260 transition functions come standard, including roll, crawl, fade in, fade out, slide and wipe.
- Video input: equipped with video and key input terminals, enabling capture of HD/SD-SDI video.
- Video output: equipped with program and preview output, allowing independent video/key output of each.

Input/Transmission Software GenCG

Input function:

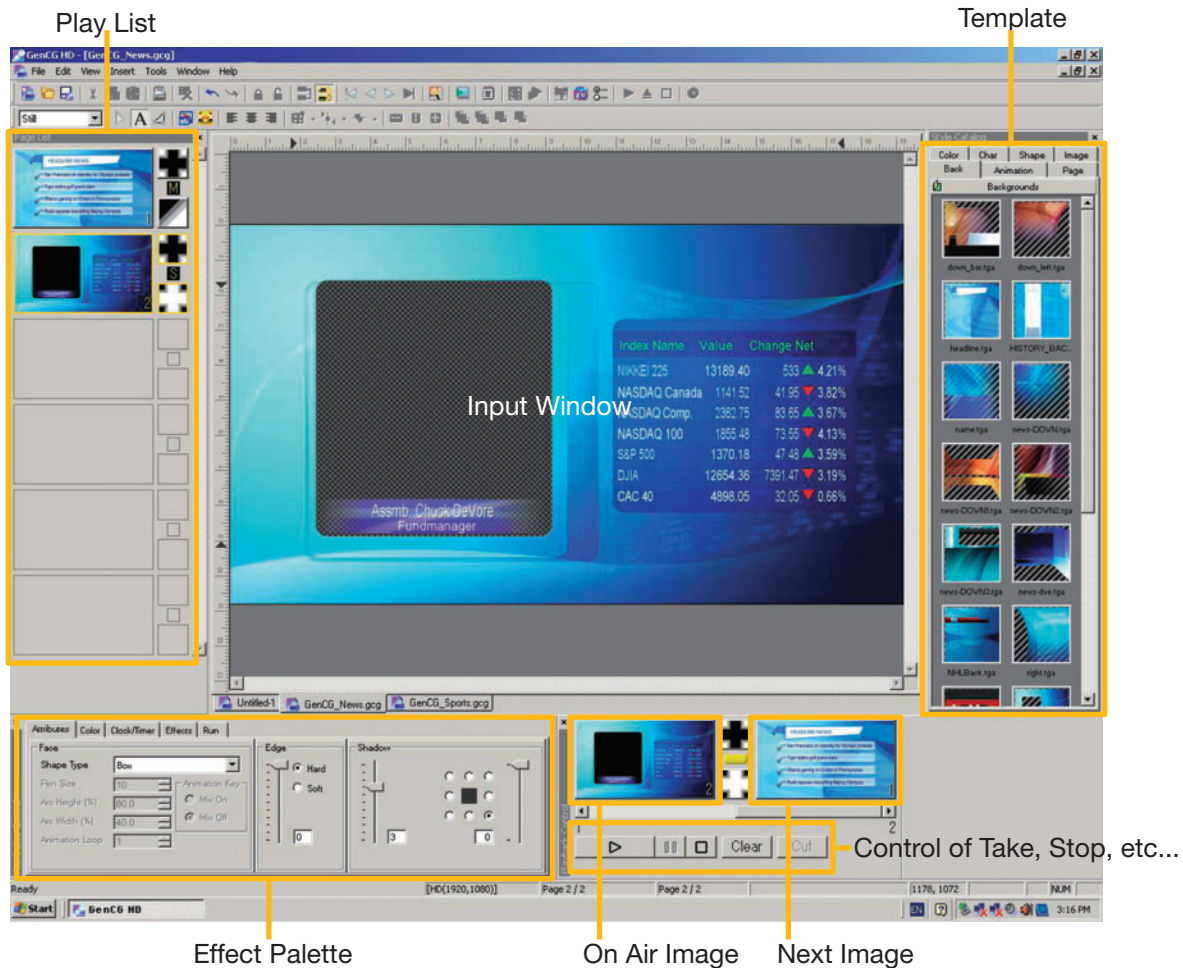
- Equipped with various decorative functions and production-related functions: supports entry of CGs from a script and input and flow following a template. During footage production, can import image data from general graphics software like Adobe Photoshop. All types of decorations can be added to imported data moreover with input software.
- Easy selection of texts transmission effects by menu: easy operation, just select from a decorations pallet. Multi-layer decorations also possible by changing parameters and combining multiple decorative effects.
- Varied decoration functions you choose with one action: just select from a decorations pallet. Multi-layer decorations also possible by changing parameters and combining decorative effects.
- Standard auto-preview function: this lets you instantly check the input texts image on an actual TV monitor. Now it is possible to produce programming while you check CGs color and character position among other factors that are hard to tell with a PC monitor.
- Import various image files: allows import of general-use image files.
- Reads text and CSV files: supports text input and flow by saving texts form to a template. Importing text data or CSV files from outside sources lets you create CGs following a template.

Transmission function:

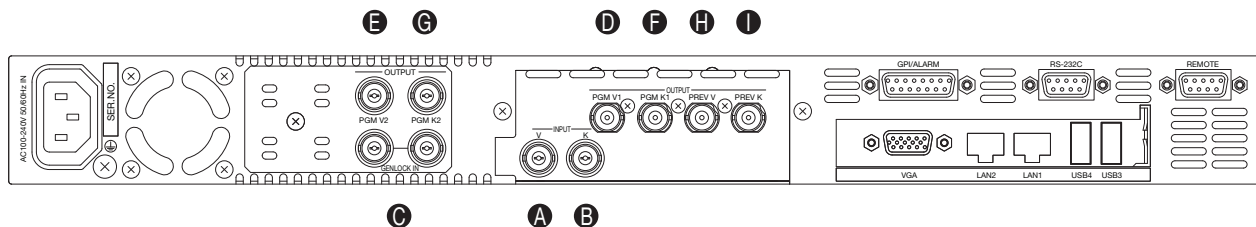
- Transmission operation with thumbnail or list display: thumbnail or list display lets you confirm on-air or next texts while transmitting them. This application is well suited for texts checking and instant selection.
- Standard capture function: this lets you capture the picture from the input line. Captured pictures are registered as texts to a pool folder and can be easily added to programming by drag and drop.
- Standard simple schedule function: this weekly scheduling function, which comes standard, lets you specify programming to be transmitted on a certain day of the week or a specific date. This gives you easy automatic transmission of programming according to an operating program.

Input/Output

Employs a simple, intuitive user interface integrating the input screen with the output screen.



Input/Output

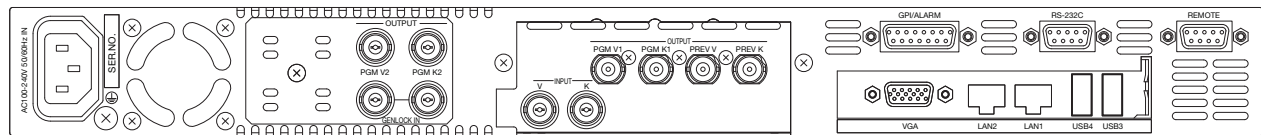


Input	A. Video IN	Video input for capture of still images
	B. Key IN	Key input for capture of still images
	C. Genlock IN	Reference input for BB or Tri-level sync
Output	D. PGM V1 OUT	PGM video output 1
	E. PGM V2 OUT	PGM video output 2
	F. PGM K1 OUT	PGM key output 1
	G. PGM K2 OUT	PGM key output 2
	H. PREV V OUT	Preview video output
	I. PREV K OUT	Preview key output

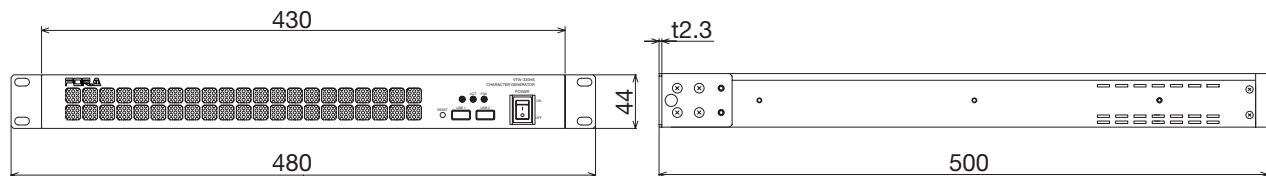
Specifications

● Standard	1080/59.94i, 1080/50i, 720/59.94p, 720/50p, 525/60, 625/50
● Video Inputs	HD-SDI: 1.485Gbps or 1.485/1.001Gbps, SD-SDI: 270Mbps, 75Ω, 2 inputs (V1/K1), BNC
● Reference Input	BB: NTSC: 0.429Vp-p/PAL: 0.45Vp-p or Tri-level sync: ±0.3Vp-p, 75Ω or loophrough, 1 input, BNC
● Video Outputs	HD-SDI: 1.485Gbps or 1.485/1.001Gbps, SD-SDI: 270Mbps, 75Ω, 6 outputs (PGM V1/PGM K1/PGM V2/PGM K2/PREV V/PREV K), BNC
● Storage (SSD)	16GB (The space available for using excludes 4 GB reserved for the system)
● Interfaces	VGA: 1 port, 15-pin mini D-sub (female) *for Display connection Ethernet: 100Base-TX/1000Base-T, 2 ports, RJ-45 USB: 2.0 (High Speed) Series A connector, 4 ports (Front x 2, Rear x 2) REMOTE: 1 port, 9-pin D-sub (female) *for RS-422 control RS-232C: 1 port, 9-pin D-sub (male) GPI/ALARM: 1 port, 15-pin D-sub (female) - ALARM: Power, Fan alarm (contact output) / - GPI: 4 inputs, 2 outputs (contact input, Open collector output)
● Temperature / Humidity	0°C - 40°C / 20% - 80% (no condensation)
● Power / Consumption	100VAC - 240VAC, 50/60Hz IN / Approx. 150VA (150W at 100VAC)
● Dimensions / Weight	430 (W) x 44 (H) x 500 (D) mm EIA1RU / Approx. 9kg
● Accessories	Operation manual, AC cord, Rack mount bracket, GenCG software (installed)

Rear Panel



External Dimensions



FOR-A COMPANY LIMITED

Head Office : 3-8-1 Ebisu, Shibuya-ku, Tokyo 150-0013, Japan

FOR-A America Corporate Office : 11155 Knott Avenue, Suite G&H, Cypress, CA 90630, USA

FOR-A America East Coast Office : 2 Executive Drive, Suite 670, Fort Lee Executive Park, Fort Lee NJ 07024, USA

FOR-A America Distribution & Service Center : 2400 North East Waldo Road, Gainesville, FL 32609, USA

FOR-A Latin America & the Caribbean : 5200 Blue Lagoon Drive, Suite #760, Miami, FL 33126, USA

FOR-A Corporation of Canada : 346A Queen Street West, Toronto, Ontario M5V 2A2, Canada

FOR-A UK Limited : UNIT C71, Barwell Business Park, Leatherhead Road, Chessington Surrey, KT9 2NY, UK

FOR-A Italia S.r.l. : Viale Europa 50 20093, Cologno Monzese (MI), Milan, Italy

FOR-A Corporation of Korea : 801 Dangsang Building, 53-1 Dangsang-Dong, Youngdeungpo-Gu, Seoul 150-800, Korea

FOR-A China Limited : 708B Huateng Building, No. 302, 3 District, Jinsong, Chaoyang, Beijing 100021, China

ISO 9001 and 14001 certified (Sakura R&D)

Homepage: <http://www.for-a.com/>

Tel : +81 (0)3-3446-3936 Fax : +81 (0)3-3446-1470

Tel : +1 714-894-3311 Fax : +1 714-894-5399

Tel : +1 201-944-1120 Fax : +1 201-944-1132

Tel : +1 352-371-1505 Fax : +1 352-378-5320

Tel : +1 305-931-1700 Fax : +1 305-264-7890

Tel : +1 416-977-0343 Fax : +1 416-977-0657

Tel : +44 (0)20-8391-7979 Fax : +44 (0)20-8391-7978

Tel : +39 02-254-3635/6 Fax : +39 02-254-0477

Tel : +82 (0)2-2637-0761 Fax : +82 (0)2-2637-0760

Tel : +86 (0)10-8721-6023 Fax : +86 (0)10-8721-6033