

## Compact LTFs Archiving Box

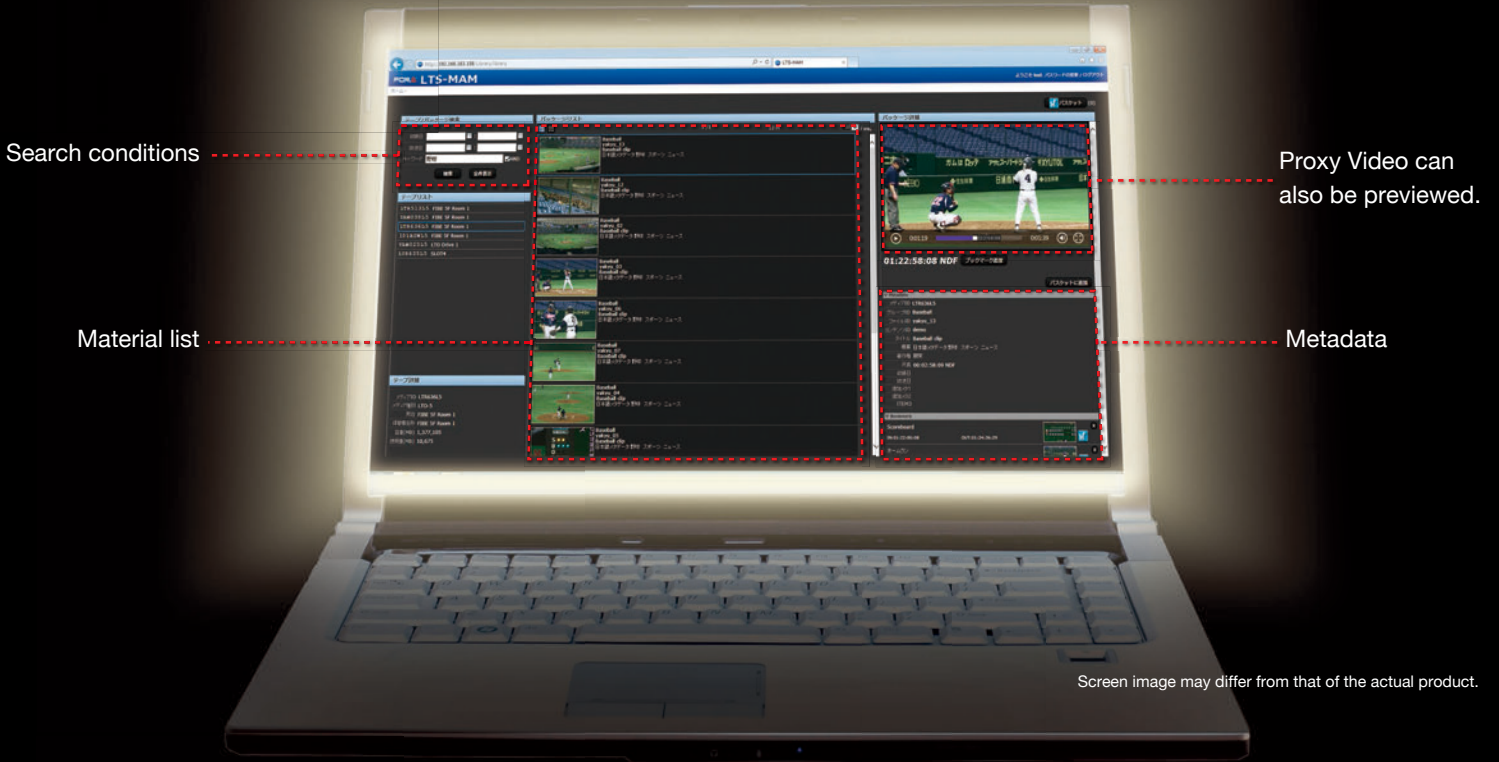
Combining the LTS-MAM material file management software with the LTS-50 LTO server creates an archive system



LTS-MAM material file management software is optional software that operates on the LTS-50 LTO server. This software lets users register, search, re-purpose, and manage material files, via an intuitive web browser\*1 interface using a LAN-connected PC or Mac computer.

If it is too early to introduce a large-scale archive system to store video materials, completed master program, non-linear editing files, and other data, then how about starting by organizing familiar material files, such as projects that your department is in charge of? Archiving in folder units is also possible.

\*1 IE 10, Google Chrome, Safari, etc.



Screen image may differ from that of the actual product.

### Archiving and retrieval between storage and LTO tapes

Material files can be archived and retrieved between shared storage on a LAN and an LTO tape inserted into the LTS-50. This provides seamless storage and re-purposing of non-linear editing materials and completed masters.

### Material management

LTO tapes that have been recorded using the LTR-100HS / 120HS are automatically registered to the LTS-MAM database simply by inserting them into the LTS-50. When an LTO tape is registered, thumbnails, Proxy Video\*2, metadata and other information is saved in the LTS-MAM database on the HDD of the LTS-50, so the contents can be searched and previewed even when the tape is not mounted in the LTS-50.

In addition, the HDD storage of the LTS-50 can be expanded by installing additional network-attached storage (NAS) devices to store Proxy Video.

\*2 An automatic generation option is also available when using XDCAM-compatible or AVC-Intra/DVCPRO MXF files.

### Search and preview

A list of archived material files can be viewed with thumbnails and metadata by accessing LTS-MAM using a web browser via a network terminal. Click the target material file from among the data narrowed down by the search function, using metadata to display information such as the LTO tape on which the file is saved, whether that tape is currently mounted, and the shelf where the tape is stored.

## Partial Retrieve and Batch Retrieve functions

Once the target material file has been found, the specified location can be extracted by specifying the IN and OUT points bookmarking using the corresponding time codes while checking file contents (Partial Retrieve function). Multiple bookmarks can be set for a single material file. Once all bookmarks have been set, the specified locations in each file can be retrieved successively in a single batch simply by selecting the material files from which the locations are to be extracted (Batch Retrieve function).

## Connection with an LTO auto-loader

LTS-MAM software supports linkage functions with TS3100 and TS3200 LTO auto-loaders made by IBM. Introduction of an LTO auto-loader normally requires a control PC or other control system, but construction of an LTO auto-loader system can be achieved simply by installing the optional LTS-TSC plug-in software and connecting the LTS-50 and LTO auto-loader using an SAS cable\*3.

\*3 Supports only one LTO auto-loader connection.

# An expandable archive system

## PHASE 1 Shelf management

Archive management can begin simply by arranging archived LTO tapes on storage shelves. Search and preview can be performed using the LTS-MAM interface, which can be operated via web browser to determine what material files are contained on the LTO tapes arranged on the shelves, and on which tape the target file is saved. This eliminates the need to spend time and effort searching for material files.



## PHASE 2 Integrated management of LTO auto loader and tape shelves

Archives that begin with shelf management can be easily upgraded to a system using an LTO auto-loader. Just connect the LTS-50 and LTO auto-loader using an SAS cable. This enables both management of material files on the tapes inside the LTO auto-loader, and shelf management of tapes that exceed the LTO auto-loader capacity.



### FOR-A COMPANY LIMITED

Head Office: 3-8-1 Ebisu, Shibuya-ku, Tokyo 150-0013, Japan

FOR-A Corporation of America: 11155 Knott Ave., Suite G&H, Cypress, CA 90630, U.S.A.

FOR-A Corporation of America East Coast Office: 2 Executive Drive, Suite 670, Fort Lee Executive Park, Fort Lee NJ 07024, U.S.A.

FOR-A Corporation of America Distribution & Service Center: 2400 N.E. Waldo Road, Gainesville, FL 32609, U.S.A.

FOR-A Corporation of America Miami Office: 5200 Blue Lagoon Drive, Suite 760, Miami, FL 33126, U.S.A.

FOR-A Corporation of Canada: 346A Queen Street West, Toronto, Ontario M5V 2A2, CANADA

FOR-A Europe S.r.l.: Via Volturmo, 37, 20861 Brugherio MB, Italy

FOR-A UK Limited: Trident Court, 1 Oakcroft Road, Chessington, KT9 1BD, UK

FOR-A Italia S.r.l.: Via Volturmo, 37, 20861, Brugherio MB, Italy

FOR-A Corporation of Korea: 1007, 57-5, Yangsan-ro, Yeongdeungpo-gu, Seoul 150-103, Korea

FOR-A China Limited: 708B Huateng Building, No. 302, 3 District, Jinsong, Chaoyang, Beijing 100021, China

FOR-A Middle East-Africa Office: Jebel Ali Free Zone, LOB-16, Office 619, P.O. Box 261914, Dubai, U.A.E.

ISO 9001 and 14001 certified (Sakura R&D)

© 2013 FOR-A Company Ltd. FOR-A is a registered trademark of FOR-A Company Ltd. Design and specifications subject to change without notice. Printed in Japan. 1308FJ2B

URL: <http://www.for-a.com/>

Tel : +81 (0)3-3446-3936

Fax : +81 (0)3-3446-1470

Tel: +1-714-894-3311

Fax: +1-714-894-5399

Tel: +1-201-944-1120

Fax: +1-201-944-1132

Tel: +1-352-371-1505

Fax: +1-352-378-5320

Tel: +1-305-931-1700

Fax: +1-305-264-7890

Tel: +1-416-977-0343

Fax: +1-416-977-0657

Tel: +39-039-879-778

Fax: +39-039-878-140

Tel: +44 (0)20-3044-2935

Fax: +44(0)20-3044-2936

Tel: +39-039-881-086/103

Fax: +39-039-878-140

Tel: +82 (0)2-2637-0761

Fax: +82 (0)2-2637-0760

Tel: +86 (0)10-8721-6023

Fax: +86 (0)10-8721-6033

Tel: +971 4 887 6712

Fax: +971 4 887 6713