

# Introduction of File Based Products

**LTS-80**

**April, 2020**

**FOR.A**

# STEP 1

# LTO INTRODUCTION



# OVERVIEW / LTO TAPE

**Linear Tape-Open (LTO)** is a magnetic tape technology for computers. Developed and formulated by Seagate Technology, Hewlett-Packard (now: Hewlett-Packard Enterprise) and IBM.

## Features

- Low cost
- Large capacity of data
- High reliability
- High speed

## Users

- Banks
- Hospital
- Food Factories
- Broadcasting / Video industries.

# OVERVIEW / LTO TAPE

LTO is a very reliable for offline storage.

Example : Hard disc drive

- Storage Period : 3 to 5 years
- Operating time : 10,000 to 20,000 hours
- Transfer speed : 200 MB / Sec.

HDD excels in random access, but it is not uncommon for it to fail within a year if it is overused by direct editing.

If you leave the data stored off line for many years, there is a possibility of data loss due to head adhesion.

# ROAD MAP

First introduced in 2000, LTO technology is currently in its 8<sup>th</sup> generation.

New generations have been introduced regularly with higher capacity and transfer rates along with new features to further protect your data and content.

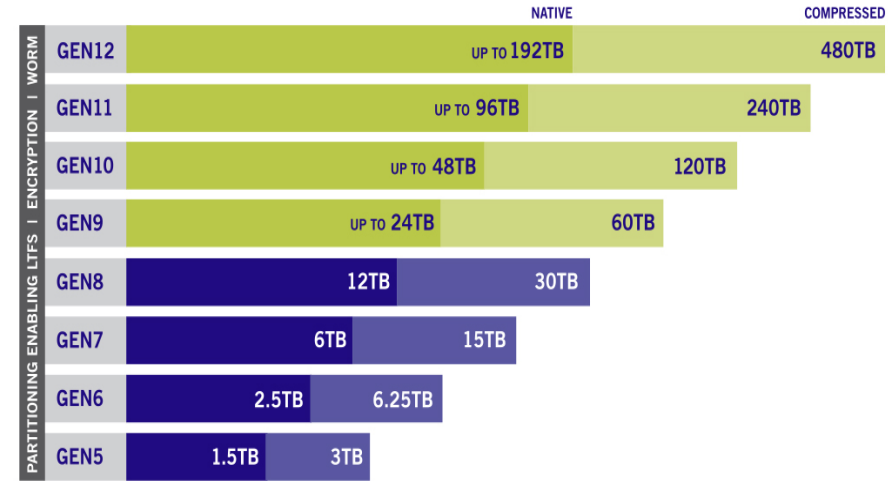


LTO8



LTO8 パッケージ

## LTO ULTRIUM ROADMAP ADDRESSING YOUR STORAGE NEEDS



**NOTE:** Compressed capacity for generation 5 assumes 2:1 compression. Compressed capacities for generations 6-12 assume 2.5:1 compression (achieved with larger compression history buffer).

**SOURCE:** The LTO Program. The LTO Ultrium roadmap is subject to change without notice and represents goals and objectives only. Linear Tape-Open, LTO, the LTO logo, Ultrium, and the Ultrium logo are registered trademarks of Hewlett Packard Enterprise, IBM and Quantum in the US and other countries.

## LTO – 8 / SPEC.

	LTO-7	LTO-8
<i>Raw data capacity</i>	6TB	12TB
Uncompressed speed	300MB/s	360MB/s
Tracks per wrap (read/write elements)	32	32
End-to-end passes required to fill tape	112	208
Total tracks	3584	6656
Tape length	960m	960m
LTO-5 Tape	Read	-
LTO-6 Tape	Read/Write	×
LTO-7 Tape	Read/Write	Read/Write
LTO-8 Tape	-	Read/Write

LTO variable tool is available as an option for LTS-80  
LTO-5 / 6 tape can be integrated into LTO-7 / 8

**STEP 2**

**LTS-80**



# REVIEW / LTS-80

- Data storage on LTO-8 tape
- High-speed data backup from external storage (USB3.0, NAS)
- Simultaneous copy to LTO and one external device (USB3.0, NAS)
- Automatic proxy generation at video file archiving (option)
- Primary and secondary copying is possible using an external LTO drive (optional)
- LTR browser supports MAC
- Management of material files from WEB browser with LTS-MAM option
- Equipped with a partial retrieve function that extracts only the designated IN / OUT points.





# REAR PANEL / LTS-80

## Caution for display selection

- No DVI Port
- No Display port
- No HDMI
- Only VGI



# OPTION / 10G OPTION

Option1 / LTS-10GR ... RJ45 option (LAN) 2 connector

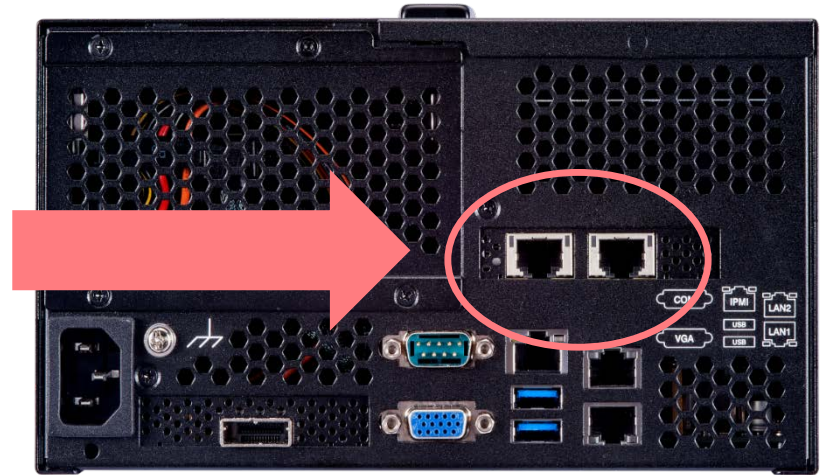
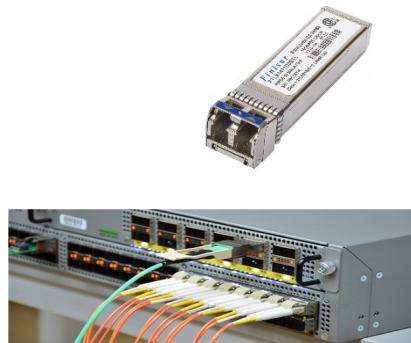
Option2 / LTS-10GS ... SFP + (optical) option 1 connector  
(optical transceiver x 1 included)

\* Depends on the application, it is necessary to confirm with customer.

Option1/Image



Option2/Image



# CONFIGURATION / MINIMUM

1/ LTS-80



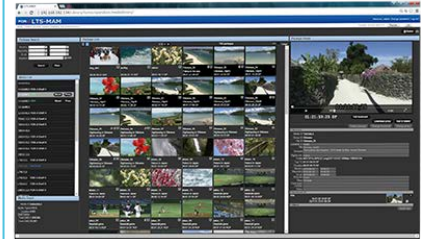
2/ Display



3/ Keyboard Mouse



4/ LTS-MAM



- LTO and 1 HDD can be copied at the same time
  - LTO and 2 HDD cannot be copied at the same time
  - It is possible to copy data from HDD to LTO
- \*Copy needs to be done in codec format supported by LTS-80

A low-poly geometric background consisting of various shades of gray triangles and polygons, creating a faceted, crystalline effect. The background is more prominent on the left side and fades into a plain white background on the right.

**FOR.A**