

MXF CLIP SERVER (BASEBAND CONVERTER) MBP-120SX/125SX

XDCAM/XDCAM HD/XDCAM HD422 FORMAT



Touch-panel interface sold separately

The Perfect Unit for File-Based Production

These two models (MBP-120SX/125SX) are compact (1U) video clip servers equipped with HD/SD-SDI inputs and outputs and a solid-state drive (SSD) for recording. Record and play MXF files compatible with Sony XDCAM/XDCAM HD/XDCAM HD422. Clips can be transferred or saved over Gigabit Ethernet. Highly versatile and reliable, the servers can be used in a variety of applications including ingest, playback, and even program playout using a playout system.

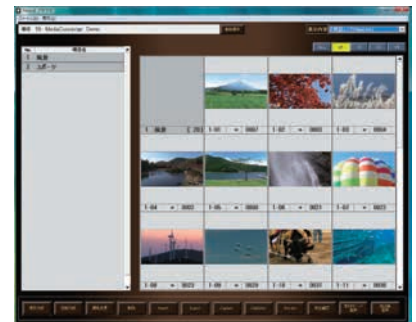
Playback via touch-panel interfaces



Playback using playlists



List management (optional)



- 1U compact main unit employs a vibration-resistant case
- MBP-120SX: Sony XDCAM/XDCAM HD/XDCAM HD422 compatible model
- MBP-125SX: Sony XDCAM/XDCAM HD/XDCAM HD422 compatible model with 8 channels of AES I/O model
- Mutual conversion between MXF files and HD/SD-SDI signals in real time
- Supports media file ingest from the XDCAM drive or network drive
- Obtains HD/SD-SDI baseband signals
- Supports direct playout from an external XDCAM drive via USB 3.0

- Supports high-speed data transfer via Ethernet or USB
- Genlock capability (BB or Tri-level)
- Supports basic VTR commands using RS-422 remote interface
- 8 channels of embedded audio support
- Includes control software
- Solid State Drive (SSD) included
- The standard capacity of the SSD is 240 GB

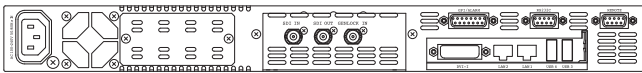
* Encoding and decoding cannot be performed at the same time

MBP-120SX/125SX Specifications

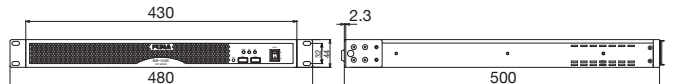
	MBP-120SX	MBP-125SX
● Storage (SSD)	240 GB/480 GB (optional)	
● MXF Format	Compatible with Sony XDCAM/XDCAM HD/XDCAM HD422 · MPEG HD422 (50 Mbps) · MPEG HD (35/25/18 Mbps) · MPEG IMX (50/40/30 Mbps)	
● Video format	HD: 1080/59.94i, 1080/50i, 720/59.94p, 720/50p or SD: 525/60, 625/50	
● Video Input	HD-SDI: 1.5 Gbps or SD-SDI: 270 Mbps, 75Ω, BNC x 1	
● Reference Input	BB: NTSC: 0.429 Vp-p/PAL: 0.45 Vp-p or Tri-level sync: 0.6 Vp-p, 75Ω, BNC x 1	BB: NTSC: 0.429 Vp-p/PAL: 0.45 Vp-p or Tri-level sync: 0.6 Vp-p, 75Ω or loophrough, BNC x 1
● Video Output	HD-SDI: 1.5 Gbps or SD-SDI: 270 Mbps, 75Ω, BNC x 1	HD-SDI: 1.5 Gbps or SD-SDI: 270 Mbps 75Ω, BNC x 4 (Output 3 and 4 support superimpose of timecode display)
● Audio Input	Embedded audio: Max. 8 channels (48 kHz/24 bit) HD: Max. 8 channels (stereo x 4), 16/24 bit, 48 kHz SD: 8 channels, 16/20 bit, 48 kHz	Embedded audio: Max. 8 channels (48 kHz/24 bit) HD: Max. 8 channels (stereo x 4), 16/24 bit, 48 kHz SD: 8 channels, 16/20 bit, 48 kHz AES: BNC x 4 (48 kHz)
● Audio Output	Embedded audio: Max. 8 channels (48 kHz/24 bit)	Embedded audio: Max. 8 channels (48 kHz/24 bit) AES: BNC x 4 (48 kHz)
● Time Code Input	SMPTE RP188 ANC	SMPTE RP188 ANC LTC: BNC x 1
● Time Code Output	SMPTE RP188 ANC	SMPTE RP188 ANC LTC: BNC x 1
● Interfaces	DVI: DVI-I x 1 (for Display connection) Ethernet: 100Base-TX/1000Base-T, RJ-45 x 2 USB: 3.0 Series A x 2 (Back) 2.0 Series A x 2 (Front) REMOTE: (RS-422) 9-pin D-sub (female) x 1 (VTR emulation protocol*) RS-232C: 9-pin D-sub (male) x 1 (for Touch panel connection) GPI/ALARM: 15-pin D-sub (female) x 1 ALARM: Power, Fan alarm (contact output) / GPI: 3 inputs, 3 outputs (contact input, open collector output) Audio Output: Stereo minijack (3.5 mm) x 1	
● Temperature / Humidity	0°C - 40°C / 20% - 80% (no condensation)	
● Power	100 VAC - 240 VAC, ±10%, 50/60 Hz	
● Consumption	70 VA (68 W) at 100 VAC to 120 VAC 73 VA (56 W) at 200 VAC to 240 VAC	80 VA (78 W) at 100 VAC to 120 VAC 81 VA (66 W) at 200 VAC to 240 VAC
● Dimensions	430 (W) x 44 (H) x 500 (D) mm EIA1U	
● Weight	7.5 kg	8 kg
● Accessories	Operation manual, AC cord, Rack mount brackets, Control software (Installed)	
● Option	List management software	

* Supported control commands: play, stop, fast-forward, rewind, and frame-by-frame advance. Check operation in advance with the connected equipment.

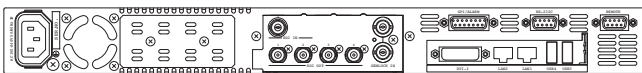
MBP-120SX Rear Panel



MBP-120SX/125SX External Dimensions



MBP-125SX Rear Panel



● XDCAM is a trademark of Sony Corporation.

FOR-A COMPANY LIMITED

Head Office: 3-8-1 Ebisu, Shibuya-ku, Tokyo 150-0013, Japan

FOR-A Corporation of America: 11155 Knott Ave., Suite G&H, Cypress, CA 90630, U.S.A.

FOR-A Corporation of America East Coast Office: 2 Executive Drive, Suite 670, Fort Lee Executive Park, Fort Lee NJ 07024, U.S.A.

FOR-A Corporation of America Distribution & Service Center: 2400 N.E. Waldo Road, Gainesville, FL 32609, U.S.A.

FOR-A Corporation of America Miami Office: 5200 Blue Lagoon Drive, Suite 760, Miami, FL 33126, U.S.A.

FOR-A Corporation of Canada: 346A Queen Street West, Toronto, Ontario M5V 2A2, CANADA

FOR-A UK Limited: Unit C71, Barwell Business Park, Leatherhead Road, Chessington Surrey, KT9 2NY, UK

FOR-A Italia S.r.l.: Via Volturmo, 37, 20047, Brughiero MB, Italy

FOR-A Corporation of Korea: 1007, 57-5, Yangsan-ro, Yeongdeungpo-gu, Seoul 150-103, Korea

FOR-A China Limited: 708B Huateng Building, No. 302, 3 District, Jinsong, Chaoyang, Beijing 100021, China

FOR-A Middle East-Africa Office: Jebel Ali Free Zone, LOB-16, Office 619, P.O. Box 261914, Dubai, U.A.E.

URL: <http://www.for-a.com/>

Tel : +81 (0)3-3446-3936 Fax : +81 (0)3-3446-1470

Tel : +1-714-894-3311 Fax : +1-714-894-5399

Tel : +1-201-944-1120 Fax : +1-201-944-1132

Tel : +1-352-371-1505 Fax : +1-352-378-5320

Tel : +1-305-931-1700 Fax : +1-305-264-7890

Tel : +1-416-977-0343 Fax : +1-416-977-0657

Tel : +44 (0)20-8391-7979 Fax : +44 (0)20-8391-7978

Tel : +39-039-881-086/103 Fax : +39-039-878-140

Tel : +82 (0)2-2637-0761 Fax : +82 (0)2-2637-0760

Tel : +86 (0)10-8721-6023 Fax : +86 (0)10-8721-6033

Tel : +971 4 887 6712 Fax : +971 4 887 6713

ISO 9001 and 14001 certified (Sakura R&D)

© 2013 FOR-A Company Ltd. FOR-A is a registered trademark of FOR-A Company Ltd. Design and specifications subject to change without notice. Printed in Japan. 1302FJ2A