

FA-10DCCRU

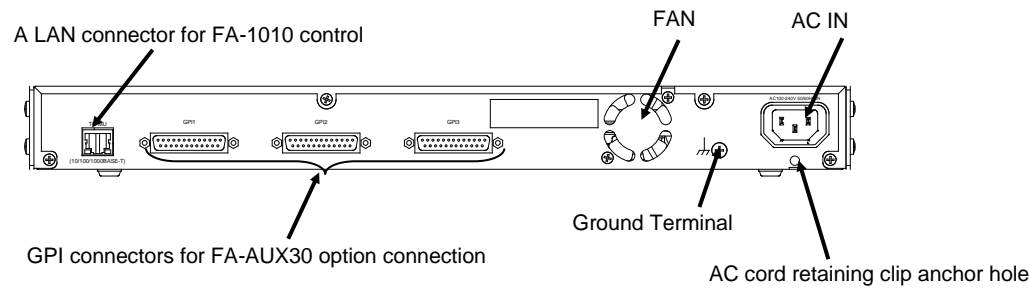
Quick Setup Guide



Packing list:
 FA-10DCCRU (1), Quick Setup Guide (1), CD-ROM (1) (including Operation Manuals),
 AC cord (1), AC cord retaining clip (1 set), Rack mount bracket set (1 set),

* The FA-10DCCRU is inoperable, except for the ability to change its own settings, unless it is connected to a Main Unit.

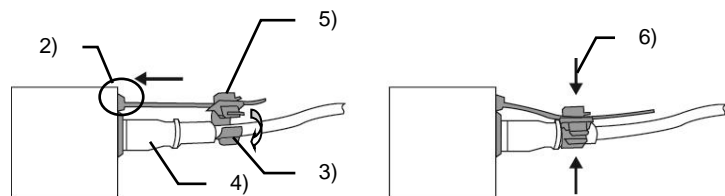
1. Rear Connectors



2. Installing the AC Cord Retaining Clip

Securely connect the AC cord with the supplied ladder strap/retaining clip assembly to prevent accidental removal from the FA-1010. Be sure to install the AC cord retaining clip before mounting the unit into a rack.

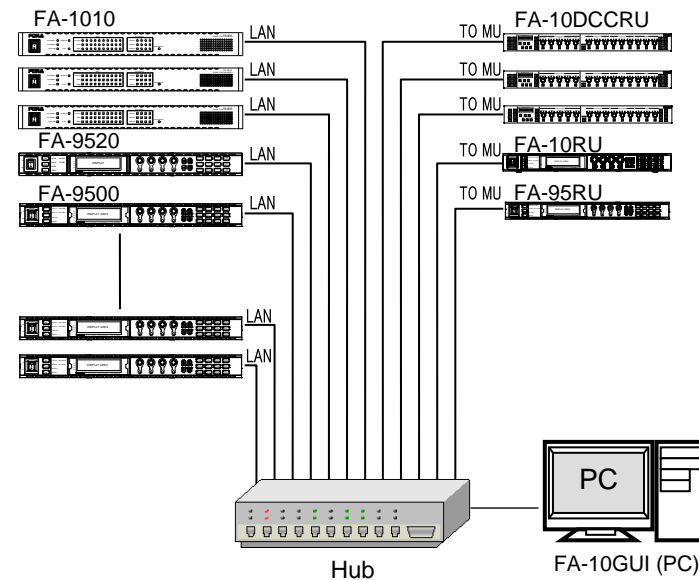
- 1) Wrap the retaining clip around the AC cord. (with the anchor of the ladder strap toward the unit.)
- 2) Insert the anchor into the hole above the AC IN socket.
- 3) Lightly fasten the clip around the AC cord.
- 4) Plug in the power cord.
- 5) Slide the clip on the ladder strap toward the plug.
- 6) Fasten the clip tightly.
- 7) Gently pull on the AC cord to ensure it securely fastened.



* Complete connections before turning the power of the unit on.

- #### Precautions
- Operate the unit **only** at the specified supply voltage.
 - **Ensure** the unit is properly grounded at all times.
 - **Ensure** the power cord and connectors are firmly connected.
 - **Do not** access circuitry with power applied to the unit.
 - Unit **should not** be operated or stored with the cover, panels, and/or casing removed.
 - Unit **should not** be operated or stored in a humid, dusty, etc. environment. Doing so could result in fire or electrical shock.
 - **Do not** allow fluids, metal fragments, or any other foreign objects to enter the unit. If foreign matter does enter the unit, turn the power off and disconnect the power cord immediately. Remove the material or contact your authorized service representative
 - If you notice any strange smells or noises coming from the unit, turn the power off immediately, turn OFF the power switch, disconnect the power cord, then contact your authorized service representative.

3. Connection



Open a web browser on the connected computer, and enter the address <http://192.168.0.101/> (factory default setting) in the address bar. The authentication dialog box (the first time only) and Information page as shown below appear.

Click **Network Settings** in the dialog window.
 Enter your user name and password.

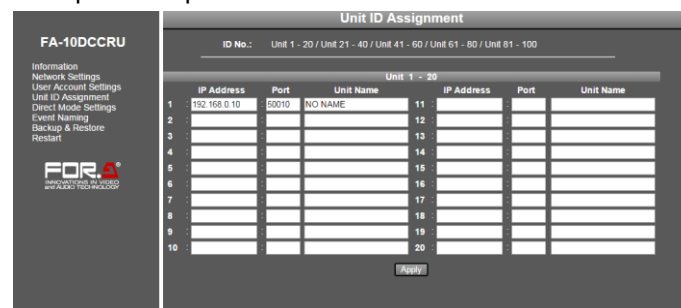
User name: **fa10dccru**
 Password: **foranetwork**

Then, click **OK**.
 After completing the settings, click **Submit**, and then click **Restart**.
 The Restart window appears. Click **Restart** in the window. The settings take effect after the restart is completed.

◆ Assigning Main Units

Click **Unit ID Assignment** to open the dialog box. The dialog example below is for assigning main units to Unit ID 1 to 20.

Enter a unit IP address and port number. Enter a unit name to be displayed for settings, if necessary, under Unit Name. After assigning IP addresses, click **Apply**. (The assignments are effective without rebooting.) Unit names can be set with up to 15 alphanumeric characters.



4. Connecting Main Units

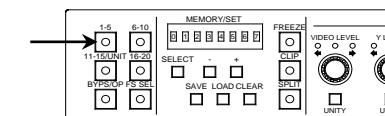
There are two ways to connect to an FA Unit (FA-505, FA-1010, FA-9520, FA-9500 or FA-9600): **Direct mode** (default) and **Unit ID Selection mode**.

- **Direct mode:** Connects a unit by specifying a DIRECT number among 20. (Unit ID number 1 to 20 are assigned to Direct number 1 to 20 as factory default.)
- **Unit ID Selection mode:** Connects a unit by specifying an ID from among 100 ID numbers.

* Note that startup connection may require one and a half second at most.

◆ Connecting in Direct Mode (default)

In the following example, an FA-10DCCRU connects to an FA Unit whose DIRECT number is 3.



- 1) Press the **1-5** button tree times. When the connection process starts, "Connection (Direct)" is displayed.
- 2) When the "Please Choose Direct MU No" message appears and Buttons **1-5**, **6-10**, **11-15** and **16-20** are flashing, press **1-5** again to confirm the connection target.
- 3) When "Connected: FA-1010" is displayed, the connection is established.

◆ Changing Connection Mode from Direct to Unit ID Selection

- 1) Press and hold down **FS SEL** for about 3 seconds.
- 2) Press **+** to select **Unit Mode Connection**.
- 3) Press **SELECT** or **FS SEL** to confirm the change.

◆ Connecting in Unit ID Selection Mode

In the following example, an FA-10DCCRU connects to an Unit whose UNIT ID number is 10.

- 1) Press **11-15/UNIT**.
- 2) Turn VIDEO LEVEL to select "ID10" (MU UNIT ID number), then "ID10: XXXXX" will be displayed, scrolling from left to right.

If "Unit Name" (for example, FA-1010) and "IP address" are saved to ID10, the message as shown below appears.

ID10: FA-1010

If only "IP Address" is saved to ID10, the message as shown below appears.

ID10: 192.168.0.10 (No Name)

- 3) Press **SELECT** to confirm the connection target.
- 4) When "Connected: FA-1010" appears, the connection is established.

You can download manuals and other documents by registering your email address.

<https://www.for-a.com/>

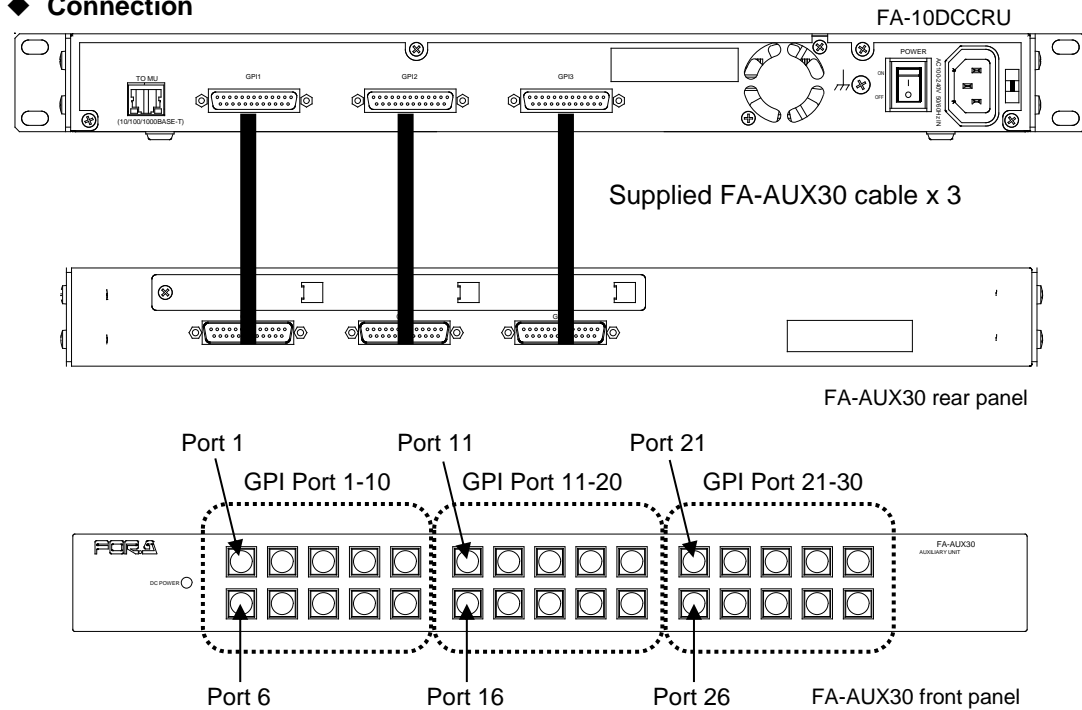


5. FA-AUX30 Option

FA-AUX30 GPI devices are specifically designed to send or receive FA-10DCCRU GPI signals.

Thirty buttons on the front panel allow to send / receive GPI signals to / from 30 GPI ports on the FA-10DCCRU.

◆ Connection

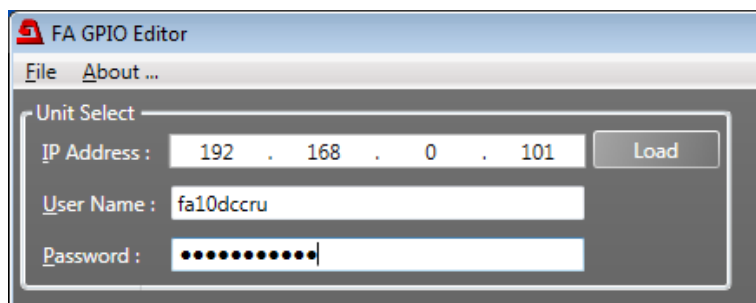


GPI input /output functions can be assigned to GPI ports on the FA-10DCCRU using the supplied FA GPIO Editor software.

◆ Installing and Starting the FA GPIO Editor

- Before installing the software, close all other applications on the computer.
- Insert the supplied CD-ROM into the PC.
Click "FA GPIO Editor > setup" on the CD-ROM to start the installation.
- Follow the installation wizard to install the FA GPIO Editor.
- After the installation, click the FA GPIO Editor shortcut icon on the desktop to start the FA GPIO Editor.
- Enter the FA-10DCCRU IP address, user name and password.
Click **Load** to load the current settings.(All ports are set to **None** as factory default.)

IP address: **192.168.0.101**
User name: **fa10dccru**
Password: **foranetwork**



◆ Assigning GPI Functions

- The FA GPI Editor screen has three tab windows, for which 10 ports per window can be set. These tab windows correspond to three button blocks on the FA-AUX30 front panel. Click a tab to display the desired port setting window.
- Refer to the "Input Setting List" table below to set **Setting 1**, **Setting 2** and **Setting 3** for each port, as needed. The Setting 2 and Setting 3 settings depend on the Setting 1 selection.

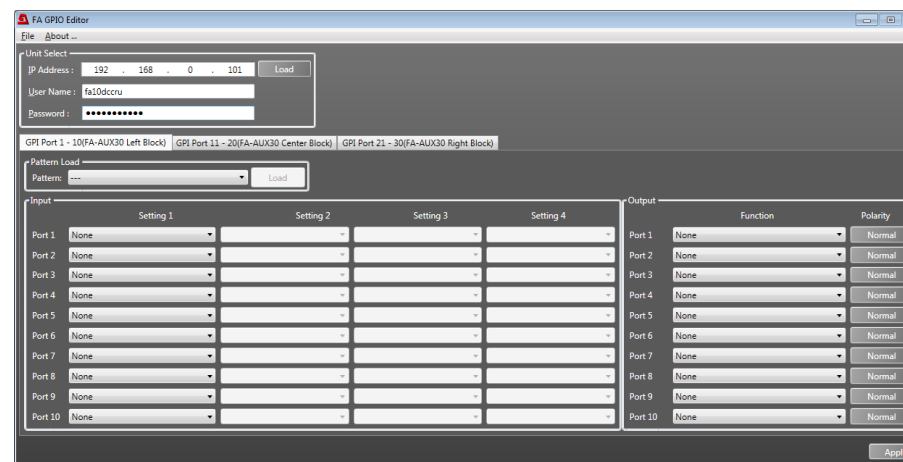
<Setting Examples>

-If set to	MU Select	Unit ID1	FS1:	Select FS1 in main unit with Unit 1D 1.
-If set to	FS Select	FS1	:	Select FS1 in the connected main unit.
-If set to	Freeze(On/Off)	None	:	Set Freeze On/Off for the selected FS.
-If set to	Freeze(On/Off)	FS1	:	Set Freeze On/Off for FS1.

* See the "Detailed Input Settings" table below for detailed input settings

- After all settings are finished, click **Apply**.

* Refer to "FA-10DCCRU Operation Manual" for GPI output settings.



Input Setting List

Port No.	Setting 1	Setting 2	Setting 3
1-30	None	-	-
	MU Select	Disconnect	-
		Unit ID1-100	None, FS1-10
	FS Select	FS1-10	-
	FS Link(On/Off)	All Clear, FS1-10	-
	Freeze(On/Off)	None, FS1-10	-
	Split Mode	Off, Mode1-3	None, FS1-10
	CC Mode	Balance, Differential, Sepia	None, FS1-10
	Gamma Curve	Center, Black, White	None, FS1-10
	Clip	Off, YPbPr, RGB	None, FS1-10
	GPI Lock(On/Off)	-	-
	Group Adjust(On/Off)	-	-
	Event Load	Default, Event1-100	-
	Event Save	Event1-100	-

Detailed Input Settings

Setting 1 setting	Description
None	No function
MU Select	MU Select allows you to select a main unit under Setting 2 (Unit ID1 - 100) and an FS of the main unit under Setting 3 (FS1 - 10). If set to None under Setting 3, the last controlled FS is selected. Main unit IP addresses must be set for Unit ID numbers in advance. If set to Disconnect under Setting 2, the port can disconnect main units.
FS Select	FS Select allows you to select an FS under Setting 2, FS1 - FS10 if connecting to FS-1010, FS1-FS5 if connecting to FS-505. If connecting to FA-9520 (FA-9520 mode) or FA-9600, FS1 and FS2 of Color Correctors are selectable. FS Select is inoperable when connecting with FA-9520 (FA-9500 mode) or FA-9500 units.
FS Link(On/Off)	Allows you to set an FS linked or unlinked under Setting 2. If All Clear is set under Setting 2, all FS channels are linked off. * This function is disabled for FA-9600.
Freeze(On/Off)	Allows you to set Freeze to On or Off. If an FS is selected under Setting 2, the controlled FS is changed to the selected one and a Freeze setting is applied to it. If None is set under Setting 2, a Freeze setting is applied to the current FS.
Split Mode	Allows you to set Split mode under Setting 2. If an FS is selected under Setting 3, the controlled FS is changed to the selected one and a Split Mode setting is applied to it. If None is set under Setting 3, a Split Mode setting is applied to the current FS.
CC Mode	Allows you to set Color Correction mode under Setting 2. If an FS is selected under Setting 3, the controlled FS is changed to the selected one and a CC Mode setting is applied to it. If None is set under Setting 3, a CC Mode setting is applied to the current FS.
Gamma Curve	Allows you to set Gamma Curve under Setting 2. If an FS is selected under Setting 3, the controlled FS is changed to the selected one and a Gamma Curve setting is applied to it. If None is set under Setting 3, a Gamma Curve setting is applied to the current FS.
Clip	Allows you to set Clip mode under Setting 2. Refer to "FA-10DCCRU Operation Manual" for details.
GPI Lock(On/Off)	Allows you to enable (GPI Lock Off) / disable (GPI Lock On) all GPI inputs.
Group Adjust(On/Off)	Allows you to enable / disable group adjustment. The group adjustment functions in the same manner as that in FA-10DCCRU.
Event Load	Allows you to load an event set under Setting 2 (Event1 - 100).
Event Save	Allows you to save settings to an event set under Setting 2 (Event1 - 100).

* GPI functions can be assigned to ports individually or in groups using Pattern Load. Refer to "FA-10DCCRU Operation Manual" for more details.