



alfalite®

LED DISPLAYS

UHD Finepix® Series



ULTRA HD PANEL FOR CRITICAL MISSIONS
IN CONTROL ROOMS, SENSITIVE INFORMATION
AND EMERGENCY MANAGEMENT ROOMS

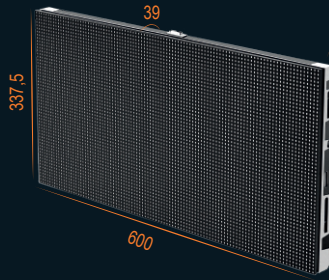
www.alfalite.com

ALFALITE UHD FINEPIX. ALL IN ONE

TOUCH SCREEN

- Interactive
- Infrared Touch Screen
- Multi-touch 20 points Technology

UHD FINEPIX[®] Panels
Best image and video quality



MULTISCREEN DATA



- Auxiliary preview/display
- 8 entry Multi-window
- Up to six 4K signals
- Transition effects
- 10 Pre-designed templates
- Interface operator

CONTROL CLICKSHARE



- ON / OFF
- SHARE CONTENT
- ANNOTATIONS
- INTERACTIVE WHITEBOARD

Corporate environments
and Control Rooms

- Multi-display mounting structures
- Chest of drawers - Racks 19"
- Ergonomic chairs 24/7/365
- Ergonomic Accessories

OPERATION CONSOLES



LED SCREENS ADVANTAGES VS VIDEOWALLS

Best image quality

- Enhanced uniform calibration
- Seamless and clean image appearance
- Higher balance and color depth
- Higher brightness (pixel to pixel calibration)
- Deepest blacks
- Best contrast; 3-5:1

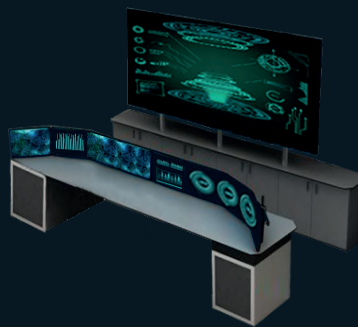


High efficiency consumption

- Great Lifespan: >100.000 hours
- Control Parameters according to needs
- Low working temperature. Less dissipation

Mechanical Accuracy

- No-gap assembly
- Unparalleled flat surface
- Curve option (concave) assembly



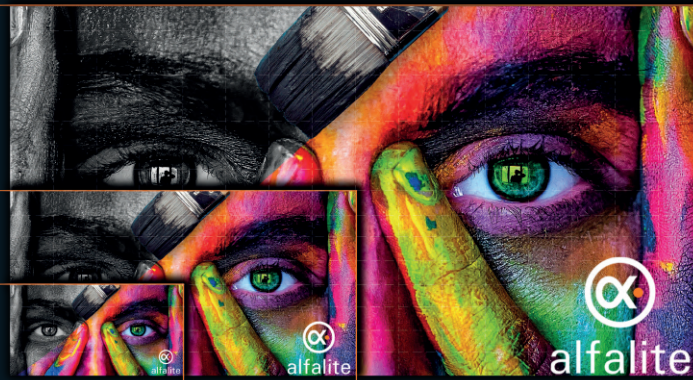
Special service and maintenance

- No disruptive module change
- Rear and Front service
- One by one components repair

SCALABLE. UNIVERSAL SIZE

- 16x16 Panels
8K: 7680 x 4320
- 8x8 Panels
4K: 3840 x 2160
- 4x4 Panels
FULL HD: 1920 x 1080

*The resolution is indicated to Alfalite UHD Finepix[®]1.2



ALFALITEWOW

- MODULAR
- COLOR CONSISTENCY
- SCALABLE AND ADVANCE DESING

VIDEOWALL SIZES

Meters	0,60x0,39m	1,20x0,67m	1,80x1,01m	2,40x1,35m	3,00x1,68m	3,60x2,02m	4,20x2,36m	4,80x2,70m	5,40x3,03m	6,00x3,38m	6,60x3,71m	9,60x5,40m
Area	0,20m ²	0,81m ²	1,82m ²	3,24m ²	5,26m ²	7,29m ²	9,92m ²	12,96m ²	16,40m ²	20,25m ²	24,50m ²	51,84m ²
Diagonal	27,1"	54,2"	81,3"	108,4"	135,5"	162,6"	189,7"	216,8"	243,9"	271"	298,1"	433,6"

SMART PANEL

- Preemptive and remote maintenance

- Temperature and humidity
- Data/video connectors
- Sender and receiver card control

- Remote monitoring and control

- External elements
- Color and brightness value
- Refresh rate (Hz)



No Fans-Noise Free
Wireless FA, HUB and modules
Heat dissipation by free convection

EUROPEAN MANUFACTURER 4.0

- Mechanical and electronic industrial design

- Design tools for CAD and 3D
- AR simulation (Augmented reality)

- PCB Manufacture. Inhouse SMD production lines

- Traceability
- Measurements for BIG DATA
- Control system and automation

- LEAN Manufacturing methodology

Quality, Reliability, Durability

ALFALITEWOW

COLOR/BRIGHTNESS ALFALITE®
CUSTOMISED CALIBRATION



#openyoureyes
#wearealfalite



SMART POWERBOX

- Powerbox Status display

- Status Report database collection, Data/video
- Main/Back-up signal state

ULTRA HIGH RESOLUTION - FINEPIX®

FINEPIX® RESOLUTION

Modelo	1x1	2x2	3x3	4x4	5x5	6x6	7x7	8x8	9x9	10x10	11x11	12x12	16x16
UHD Finepix 0.9	640x360	1280x720	1920x1080	2560x1440	3200x1800	3840x2160	4480x2520	5120x2880	5760x3246	6400x3600	7040x5960	7680x4320	10240x5760
UHD Finepix 1.2	480x270	960x540	1440x810	1920x1080	2400x1350	2880x1620	3360x1890	3840x2160	4320x2430	4800x2700	5280x2970	5760x3240	7680x4320
UHD Finepix 1.5	384x216	768x432	1152x648	1536x864	1920x1080	2304x1296	2688x1512	3072x1728	3456x1944	3840x2160	4224x2376	4608x2592	6114x3456
UHD Finepix 1.8	320x180	640x360	960x540	1280x720	1600x900	1920x1080	2240x1260	2560x1440	2880x1620	3200x1800	3520x1980	3840x2160	5120x2880

FULL HD 1920 x 1080

4 K 3840 x 2160

8 K 7680 x 4320

CUTTING EDGE TECHNOLOGY, DESIGNED TO THRILL

PRODUCT SPECIFICATIONS

UHD FINEPIX®				
Model	UHD Finepix 0.9 COB	UHD Finepix 1.2 COB / SMD	UHD Finepix 1.5 COB / SMD	UHD Finepix 1.8 SMD
PIXEL PITCH (mm)	0.9	1.2	1.5	1.8
PANEL RESOLUTION (pixel)	640 x 360	480 x 270	384 x 216	320 x 180
PIXEL DENSITY (px/m ²)	1.137.777	640.000	409.600	284.444
PANEL SIZE (mm)	600 x 337,5			
PIXEL CONFIGURATION	RGB 3 IN 1 COB	RGB 3 IN 1 SMD / COB	RGB 3 IN 1 SMD / COB	RGB 3 IN 1 SMD / COB
PANEL WEIGHT (kg) Aluminium/Magnesium	7'5		8	
BRIGHTNESS (cd/m ²)	500	500 / 900	500 / 900	900
REFRESH RATE (Hz)	>3.000	>3.000 / >3.720	>3.000 / >3.720	>3.720
IP PROTECTION LEVEL (rear/front)	IP22 indoor			
AVERAGE POWER CONSUMPTION (W/panel)	50			
LIFESPAN (hours)	100.000			
VIEWING ANGLES	170°/170°	170°/170° / 160°/160°	170°/160° / 160°/160°	160°/160°
SERVICE TEMPERATURE (°C)	-20° ~ +45°			
SERVICE HUMIDITY (%)	10° ~ 90°			

(1) MICROLED COB

- Chip integrated directly into PCB. Less LED Failures
- Higher heat dissipation. Extends the life of the LEDs
- Increased protection against bumps, dust and humidity
- Improves antistatic electricity

CERTIFICATIONS

* Technical specifications are flexible and can be modified in accordance with the project requirements.

** EMC and ROHS certifications far exceed the values of the standard



P.I. Doña Paca. C/ Zalema, 2.
21720 Rociana del Condado
Huelva. SPAIN.

Website: www.alfalite.com
info@alfalite.com
Telf. 959 41 73 71



@Alfalite



Alfalite.led



alfalite.led



Alfalite